

 **BOEING**  
COMPONENT  
MAINTENANCE MANUAL

TO: ALL HOLDERS OF NO. 2 OPENABLE WINDOW OPERATING MECHANISM ASSY. COMPONENT  
MAINTENANCE MANUAL 56-11-21

REVISION NO. 9 DATED JUL 01/04

HIGHLIGHTS

Pages which have been added or revised are outlined below together with the highlights of the revision. Remove and insert the affected pages as listed and enter Revision No. and date on the Record of Revision Sheet.

CHAPTER/SECTION

AND PAGE NO.

DESCRIPTION OF CHANGE

TITLE PAGE

Added mechanism assemblies

1

141T4843-58,-59,-60,-65,-66,-68.

REPAIR 4-1

605-606

1002-1016,1019-1042

TR & SB RECORD

Added clarifications and updated callouts.

1

401

501

REPAIR-GEN

601-602

REPAIR 1-1

601-603

REPAIR 2-1

601

REPAIR 3-1

601

REPAIR 4-1

601-605,607

701-704,706

801-802

**56-11-21**

HIGHLIGHTS

01.1

Page 1

Jul 01/04

# NO. 2 OPENABLE WINDOW OPERATING MECHANISM ASSEMBLY

PART NUMBERS 141T4843-47,-48,-51,-52,-58,  
-59,-60,-65,-66,-68,  
-507 THRU -513,-516,  
-517

COMPONENT MAINTENANCE MANUAL  
WITH  
ILLUSTRATED PARTS LIST

**56-11-21**

TITLE PAGE

Page 1

Jul 01/04

01.1



REVISION RECORD

- Retain this record in front of manual. On receipt of revision, insert revised pages in the manual, and enter revision number, date inserted and initial.

REVISION NUMBER	REVISION DATE	DATE FILED	BY	REVISION NUMBER	REVISION DATE	DATE FILED	BY



## TEMPORARY REVISION AND SERVICE BULLETIN RECORD

BOEING SERVICE BULLETIN	BOEING TEMPORARY REVISION	OTHER DIRECTIVE	DATE OF INCORPORATION INTO MANUAL
56-0001  56-0004		PRR B10160 PRR B10218 PRR B10369 PRR C20044 PRR B10788	OCT 10/82 OCT 10/82 OCT 10/82 OCT 10/84 APR 01/92 JUN 01/95

56-11-21

TR &amp; SB RECORD

01.1

Page 1

Jul 01/04


**BOEING**  
 COMPONENT  
 MAINTENANCE MANUAL

PAGE	DATE	CODE	PAGE	DATE	CODE
56-11-21			REPAIR-GENERAL		
			*601	JUL 01/04	01.1
			*602	JUL 01/04	01.1
TITLE PAGE			REPAIR 1-1		
*1	JUL 01/04	01.1	*601	JUL 01/04	01.1
2	BLANK		*602	JUL 01/04	01.1
REVISION RECORD			*603	JUL 01/04	01.1
1	JUL 10/83	01	*604	BLANK	
2	BLANK		REPAIR 2-1		
TR & SB RECORD			*601	JUL 01/04	01.1
*1	JUL 01/04	01.1	602	BLANK	
2	BLANK		REPAIR 3-1		
LIST OF EFFECTIVE PAGES			*601	JUL 01/04	01.1
*1	JUL 01/04	01	602	BLANK	
THRU LAST PAGE			REPAIR 4-1		
CONTENTS			*601	JUL 01/04	01.1
1	OCT 10/85	01.1	*602	JUL 01/04	01.1
2	BLANK		*603	JUL 01/04	01.1
INTRODUCTION			*604	JUL 01/04	01.1
1	JUL 01/90	01.1	*605	JUL 01/04	01.1
2	BLANK		*606	JUL 01/04	01.1
DESCRIPTION & OPERATION			*607	JUL 01/04	01.1
1	JUL 10/83	01	608	BLANK	
2	BLANK		ASSEMBLY		
DISASSEMBLY			*701	JUL 01/04	01.1
301	OCT 01/92	01.1	*702	JUL 01/04	01.1
302	JAN 01/92	01.1	*703	JUL 01/04	01.1
CLEANING			*704	JUL 01/04	01.1
*401	JUL 01/04	01.1	705	JAN 01/92	01.1
402	BLANK		*706	JUL 01/04	01.1
CHECK			707	JAN 01/92	01.1
*501	JUL 01/04	01.1	708	JAN 01/92	01.1
502	BLANK		FITS AND CLEARANCES		
			*801	JUL 01/04	01.1
			*802	JUL 01/04	01.1

\* = REVISED, ADDED OR DELETED

56-11-21

EFFECTIVE PAGES  
CONTINUED Page 1  
01 Jul 01/04

PAGE	DATE	CODE	PAGE	DATE	CODE
ILLUSTRATED PARTS LIST					
1001	JUL 10/83	01			
*1002	JUL 01/04	01.1			
*1003	JUL 01/04	01.1			
*1004	JUL 01/04	01.1			
*1005	JUL 01/04	01.1			
*1006	JUL 01/04	01.1			
*1007	JUL 01/04	01.1			
*1008	JUL 01/04	01.1			
*1009	JUL 01/04	01.1			
*1010	JUL 01/04	01.1			
*1011	JUL 01/04	01.1			
*1012	JUL 01/04	01.1			
*1013	JUL 01/04	01.1			
*1014	JUL 01/04	01.1			
*1015	JUL 01/04	01.1			
*1016	JUL 01/04	01.1			
*1017	JUL 01/04	01.1			
*1018	JUL 01/04	01.1			
*1019	JUL 01/04	01.1			
*1020	JUL 01/04	01.1			
*1021	JUL 01/04	01.1			
*1022	JUL 01/04	01.1			
*1023	JUL 01/04	01.1			
*1024	JUL 01/04	01.1			
*1025	JUL 01/04	01.1			
*1026	JUL 01/04	01.1			
*1027	JUL 01/04	01.1			
*1028	JUL 01/04	01.1			
*1029	JUL 01/04	01.1			
*1030	JUL 01/04	01.1			
*1031	JUL 01/04	01.1			
*1032	JUL 01/04	01.1			
*1033	JUL 01/04	01.1			
*1034	JUL 01/04	01.1			
*1035	JUL 01/04	01.1			
*1036	JUL 01/04	01.1			
*1037	JUL 01/04	01.1			
*1038	JUL 01/04	01.1			
*1039	JUL 01/04	01.1			
*1040	JUL 01/04	01.1			
*1041	JUL 01/04	01.1			
*1042	JUL 01/04	01.1			

\* = REVISED, ADDED OR DELETED

# 56-11-21

EFFECTIVE PAGES  
 LAST PAGE Page 2  
 01 Jul 01/04



TABLE OF CONTENTS

<u>Paragraph Title</u>	<u>Page</u>
Description and Operation . . . . .	1
Testing and Trouble Shooting (not applicable)	
Disassembly . . . . .	301
Cleaning. . . . .	401
Check . . . . .	501
Repair. . . . .	601
Assembly. . . . .	701
Fits and Clearances . . . . .	801
Special Tools (not applicable)	
Illustrated Parts List. . . . .	1001

**56-11-21**

CONTENTS

01.1

Page 1

Oct 10/85



## INTRODUCTION

The instructions in this manual provide the information necessary to perform maintenance functions ranging from simple checks and replacement to complete shop-type repair.

This manual is divided into separate sections:

- |  |                              |
|--|------------------------------|
| 1. Title Page                                      | 4. List of Effective Pages   |
| 2. Record of Revisions                             | 5. Table of Contents         |
| 3. Temporary Revision &<br>Service Bulletin Record | 6. Introduction              |
|  | 7. Procedures & IPL Sections |

Refer to the Table of Contents for the page location of applicable sections. An asterisked flagnote \*[ ] in place of the page number indicates that no special instructions are provided since the function can be performed using standard industry practices.

The beginning of the REPAIR section includes a list of the separate repairs, a list of applicable standard Boeing practices, and an explanation of the True Position Dimensioning symbols used.

An explanation of the use of the Illustrated Parts List is provided in the Introduction to that section.

All weights and measurements used in the manual are in English units, unless otherwise stated. When metric equivalents are given they will be in parentheses following the English units.

Design changes, optional parts, configuration differences and Service Bulletin modifications create alternate part numbers. These are identified in the Illustrated Parts List (IPL) by adding an alphabetical character to the basic item number. The resulting item number is called an alpha-variant. Throughout the manual, IPL basic item number references also apply to alpha-variants unless otherwise indicated.

Verification:

Disassembly	JUL 01/90
Assembly	JUL 01/90

# 56-11-21

INTRODUCTION

01.1

Page 1

Jul 01/90





NO. 2 OPENABLE WINDOW OPERATING MECHANISM ASSEMBLY

DESCRIPTION AND OPERATION

1. Description and Operation

- A. The No. 2 openable window operating mechanism assembly is composed of a ball screw shaft mounted in a channel. A carriage assembly is attached to the ball nut of the shaft. When the shaft rotates, the carriage assembly rides along an adjoining track. A gear box, with 1:2 ratio, is attached to one end of the shaft. The mechanism assembly is not operational until installed in the aircraft.
- B. Installation parts for the mechanism assembly include a series of two gear boxes, with a two-foot long torque shaft between, linking the gear box of the mechanism assembly to a crank handle near the pilot. The three gear boxes in series achieve a 1:8 ratio.

2. Leading Particulars (approximates)

- A. Length -- 40 inches
- B. Width -- 6 inches
- C. Depth -- 3 inches
- D. Weight -- 15 pounds

56-11-21

DESCRIPTION & OPERATION

01

Page 1

Jul 10/83

DISASSEMBLY

1. Use standard industry practices for disassembly of this component, and additional procedures in following steps.

NOTE: Disassemble this component only as necessary to complete fault isolation, determine the serviceability of parts, perform required repairs, and restore the unit to serviceable condition.

2. Disassemble channel assembly (315A, 320A, IPL Fig. 1) from remainder of mechanism assembly (1L, 5J).
  - A. Remove fasteners (10A, 37, 282, 285, 295, 297, 300).
  - B. Push gently on exposed shaft of ball screw (225); grasp bracket assembly (645A, 650A) and slide ball screw (225) and track (60C, 65C) out of end of channel assembly (315A, 320A).
  - C. Remove fasteners (90, 92).
  - D. Remove bearing block assembly (120) and shims (102A) as required.

NOTE: Do not remove snap ring (125) or bearing (130) unless necessary for repair or replacement.

- E. Remove the stop assembly (119B) by removing the bolt (119L), the support (119E) and bumper (119J).
3. Remove carriage assembly (160A, 165A) from ball screw (225).
    - A. Remove bolts (145) and washers (150).

NOTE: Do not disassemble carriage assembly (160A, 165A) unless necessary for repair or replacement. If bearings (185C) or cam rollers (205) are removed, washers (175, 177, 195) should be discarded and replaced with new washers upon assembly.

4. Remove track (60C, 65C) by removing bolts (15A, 20, 25) and washer (40).
5. Remove gearbox (270A) and couplings (230, 240) from bracket assembly (645A, 650A) by removing bolts (245, 250A), cotter pin (750), pins (730) and washers (745).

NOTE: If gearbox (270A) requires maintenance, refer to manufacturer's instructions.

6. Remove ball screw (225) from bracket assembly (645A, 650A) by removing nut (725).

**56-11-21**

DISASSEMBLY

01.1

Page 301

Oct 01/92

NOTE: Do not remove snap ring (690) or bearing (695) unless necessary for repair or replacement.

7. Remove handle assembly (870B) from gearbox (865) by removing screw (875) and nut (880).

NOTE: If gearbox (865) or handle assembly (870C) require maintenance, refer to manufacturer's instructions.

8. Disassemble handle assembly (870B) by bending up lockwasher (890), and removing nut (885) and lockwasher (890).

NOTE: Do not remove bushing (905) unless necessary for repair or replacement.

**56-11-21**

DISASSEMBLY

01.1

Page 302

Jan 01/92

CLEANING

1. Clean all parts but bearings by standard industry practices and the instructions in SOPM 20-30-03.
2. Clean bearings (130, 185B, 205, 695, IPL Fig. 1) by the instructions in SOPM 20-30-01.

**56-11-21**CLEANING  
Page 401  
Jul 01/04

CHECK

- | 1. Examine all parts for defects by standard industry practices. Refer to Fits and Clearances for design dimensions and wear limits.
- | 2. Magnetic particle check (SOPM 20-20-01) -- tracks (60C, 65C, IPL Fig. 1), stop (117, 119, 119A), support (119E), washer (119R), bolt (145), flange (155), couplings (230, 240), shafts (820, 830), nut (885), spring (895), plate (920A).
- | 3. Penetrant check (SOPM 20-20-02) -- bearing block (135), brackets (210A, 215A, 615, 620), carriage (220A), shaft (825).
- | 4. Spring (895)
  - | A. Compress spring to 1.26-1.32 inches. The load to do this must be 95-105 pounds.
  - | B. Compress spring to 1.16-1.22 inches. The load to do this must be 111-121 pounds.
- | 5. Examine gearboxes (270, 270A, 775, 865) by the vendor's instructions.

**56-11-21**

CHECK

01.1

Page 501

Jul 01/04

REPAIR – GENERAL1. Content

- A. Repair, refinish and replacement procedures are included in separate repair sections as follows:

<u>P/N</u>	<u>NAME</u>	<u>REPAIR</u>
141T4887	BEARING BLOCK ASSEMBLY	1-1
141T4882	CRANK HANDLE ASSEMBLY	2-1
141T4885	BRACKET ASSEMBLY	3-1
- -	MISCELLANEOUS PARTS	4-1
- -	REFINISH	

2. Standard Practices

- A. Refer to the following standard practices, as applicable, for details of procedures in individual repairs.

SOPM 20-00-00	Introduction
SOPM 20-10-01	Repair and Refinish of High Strength Steel Parts
SOPM 20-10-03	Shot Peening
SOPM 20-20-02	Penetrant Methods of Inspection
SOPM 20-30-02	Stripping of Protective Finishes
SOPM 20-30-03	General Cleaning Procedures
SOPM 20-41-01	Decoding Table for Boeing Finish Codes
SOPM 20-42-05	Bright Cadmium Plating
SOPM 20-43-01	Chromic Acid Anodizing
SOPM 20-43-03	Chemical Conversion Coatings for Aluminum
SOPM 20-44-02	Temporary Protective Coatings
SOPM 20-50-03	Bearing and Bushing Replacement
SOPM 20-50-07	Lubrication
SOPM 20-50-08	Application of Bonded Solid Film
SOPM 20-60-02	Finishing Materials
SOPM 20-60-03	Lubricants
SOPM 20-70-01	Protection, Storage, and Handling of Airplane Components

3. Materials

NOTE: Equivalent substitutes can be used.

- A. Enamel (SOPM 20-60-02)

- (1) BMS 10-11, Type 2, BAC8925 beige
- (2) BMS 10-72, BAC8925 beige

56-11-21

REPAIR-GENERAL

01.1

Page 601

Jul 01/04

(3) BMS 10-72, BAC8924 dark brown

| B. Grease -- BMS 3-33 or MIL-G-23827 (SOPM 20-60-03)

| C. Lubricant, solid film -- BMS 3-8, class A (SOPM 20-60-03)

| D. Primer -- BMS 10-11, Type 1 (SOPM 20-60-02)

| 4. Dimensioning Symbols

| A. Standard True Position Dimensioning Symbols used in applicable repair procedures are shown in SOPM 20-00-00.

**56-11-21**

REPAIR-GENERAL

01.1

Page 602

Jul 01/04

BEARING BLOCK ASSEMBLY – REPAIR 1-1

141T4887-1

**NOTE:** Refer to REPAIR-GENERAL for a list of applicable standard practices.  
Refer to IPL Fig. 1 for item numbers.

**1. Bearing Replacement**

- A. Remove snap ring (125).
- B. Remove the old bearing (130).
- C. If you find defects on the block surfaces, refer to par. 2 for repair instructions.
- D. Install a replacement bearing (SOPM 20-50-03) with grease.
- E. Install a replacement snap ring (SOPM 20-50-03).

**2. Repair**

- A. Hole for bearing (Fig. 601)
  - (1) Machine as necessary within repair limits to remove defects.
  - (2) Penetrant examine (SOPM 20-20-02).
  - (3) Refinish as indicated.
  - (4) Make a repair bushing (Fig. 602) to adjust for the material removed.
  - (5) Install the bushing in the block by the shrink-fit method.  
Adjustment of the installed bushing bore is not necessary.

**56-11-21**

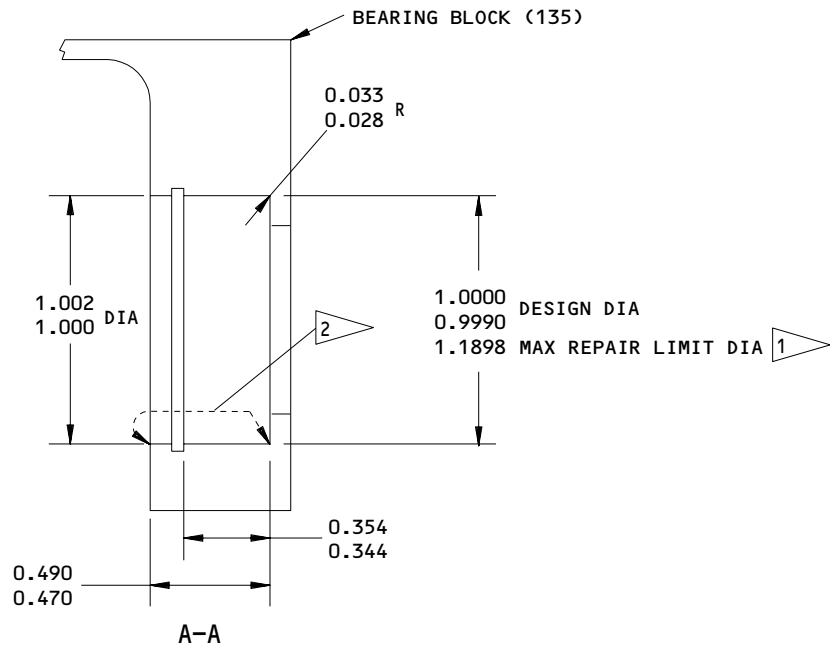
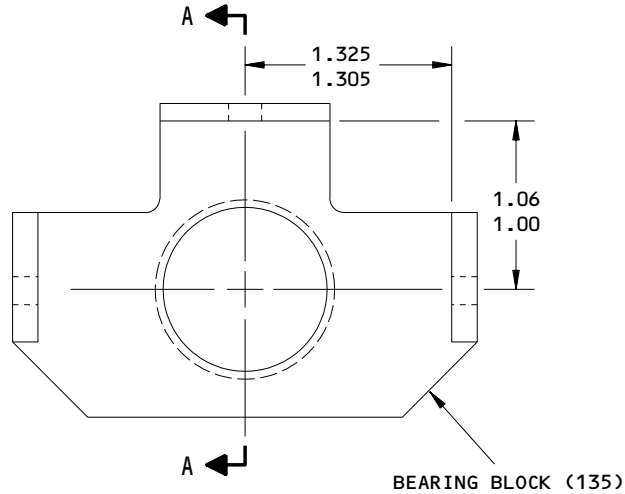
REPAIR 1-1

01.1

Page 601

Jul 01/04





**REFINISH**

BORIC ACID-SULFURIC ACID ANODIZE (F-17.31).  
 APPLY BMS 10-11, TYPE 1 PRIMER (F-20.02) AND  
 BMS 10-11 TYPE 2 ENAMEL (F-21.26-8925, WHICH  
 REPLACES SRF-14.903-8925), UNLESS SHOWN BY 2

- 1 LIMIT FOR INSTALLATION OF REPAIR BUSHING (FIG. 602)
- 2 NO PRIMER OR ENAMEL

**REFINISH**

REF 1  
 125 ALL MACHINED SURFACES UNLESS SHOWN  
 DIFFERENTLY

MATERIAL: AL ALLOY

ITEM NUMBERS REFER TO IPL FIG. 1

ALL DIMENSIONS ARE IN INCHES

141T4887-5  
 Bearing Block Repair and Refinish  
 Figure 601

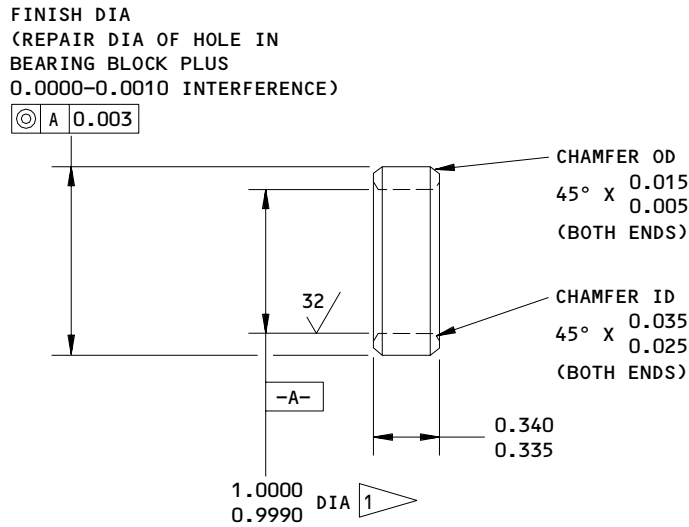
**56-11-21**

REPAIR 1-1

Page 602

Jul 01/04

01.1



1 BORE SIZE ADJUSTMENT NOT NECESSARY  
 AFTER INSTALLATION

63/ ALL MACHINED SURFACES UNLESS SHOWN  
 DIFFERENTLY

MATERIAL: AL-NI-BRZ (AMS 4640),  
 ALLOY NO. 630  
 OPTION: MAKE FROM BACB28Y16M034

FINISH: CADMIUM PLATE (F-15.06).  
 NO PLATING IN BORE

DIMENSIONS APPLY AFTER PLATING

ALL DIMENSIONS ARE IN INCHES

Repair Bushing Details  
 Figure 602

**56-11-21**

REPAIR 1-1

01.1

Page 603

Jul 01/04

CRANK HANDLE ASSEMBLY – REPAIR 2-1

141T4882-7

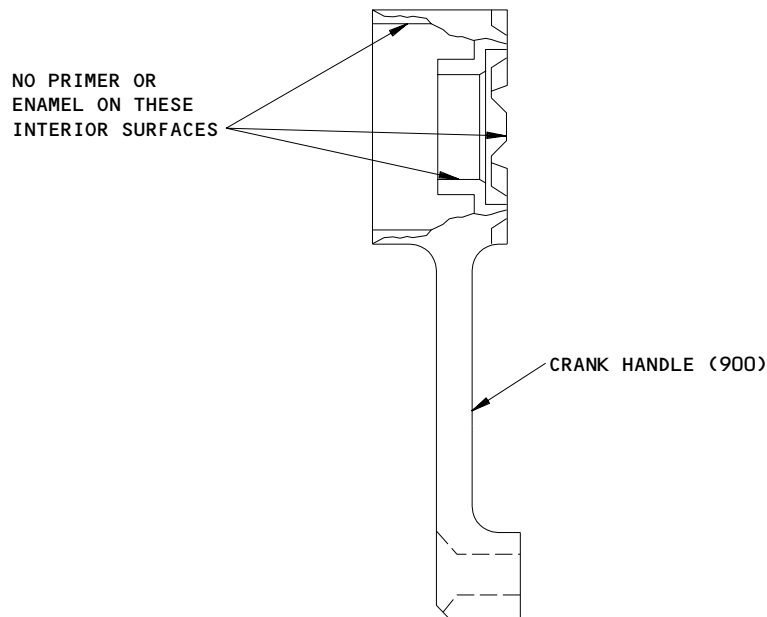
**NOTE:** Refer to REPAIR – GENERAL for a list of applicable standard practices.  
 Refer to IPL Fig. 1 for item numbers.

**1. Bushing Replacement**

- A. Remove the old bushing (905).
- B. Install a replacement bushing (SOPM 20-50-03).

**2. Refinish**

- A. Crank handle (900) -- Apply BMS 10-11, Type 1 primer (F-20.02) and BMS 10-72 dark brown enamel (F-22.03-8924) unless shown in Fig. 601.  
 Material: 15-5PH CRES, 150-170 ksi.



141T4888-11  
 Crank Handle Refinish  
 Figure 601

BRACKET ASSEMBLY – REPAIR 3-1

141T4885-7, -8

**NOTE:** Refer to REPAIR – GENERAL for a list of applicable standard practices.  
Refer to IPL Fig. 1 for item numbers.

**1. Bearing Replacement**

- A. Remove retaining ring (690).
- B. Remove the old bearing (695).
- C. Install a replacement bearing (SOPM 20-50-03) with grease on mating surfaces.
- D. Install a replacement retaining ring (SOPM 20-50-03).

**2. Refinish**

- A. Bracket fitting (715A, 720A) -- Chromic acid anodize or sulfuric acid anodize (F-17.05) and apply BMS 10-11, Type 1 primer (F-20.02) all over, but no primer in bearing bore or retaining ring groove. Material: Al alloy.

**56-11-21**

REPAIR 3-1

01.1

Page 601

Jul 01/04

| MISCELLANEOUS PARTS REFINISH - REPAIR 4-1

- | 1. Repair of these parts is only replacement of the original finish. Refer to REPAIR-GENERAL for a list of applicable standard practices.

56-11-21

REPAIR 4-1

01.1

Page 601

Jul 01/04

IPL FIG. & ITEM	MATERIAL	FINISH
<u>Fig. 1</u> Operating Mechanism Assembly	--	Apply BMS 10-72 beige enamel (F-22.03-8925) as shown in Fig. 602.
Bolt (20)	Ti alloy	Apply BMS 10-85, Type 1 coating.
Tracks (60C,65C)	15-5PH CRES 180-200 ksi	Passivate (F-17.25, which replaces F-17.09).
Brackets (80,85) filler (675), shaft (825)	Al alloy	Chromic acid anodize and apply BMS 10-11, Type 1 primer (F-18.13) all over.
Stop (117), flange (155)	4340 steel 150-170 ksi	Cadmium plate (F-15.06).
Bolt (145)	15-5PH CRES 150-170 ksi	Cadmium plate (F-15.06). Important dimensions are shown in Fig. 603.
Ball screw stop (119,119A), Ball screw washer (119R)	4340 steel 150-170 ksi	Cadmium plate (F-15.06).
Support (117M, 119E)	15-5PH CRES HT TR 180-200 ksi	Passivate (F-17.25, which replaces (F-17.09). Apply BMS 10-11, Type 1 primer (F-18.12). Apply BMS 10-11, Type 2 enamel (F-21.26-8925, which replaces (SRF-14.903-8925).
Brackets (210B, 215B) Carriage (220B)	Al alloy	Chromic acid anodize (F-17.04). Apply BMS 10-11, Type 1 primer (F-20.02) and BMS 10-11, Type 2 enamel (F-21.26-8925, which replaces SRF-14.903-8925) all over.
Brackets (210A, 215A), carriage (220A)	Al alloy	Chromic acid anodize (F-17.05). Apply BMS 10-11, Type 1 primer (F20.02) and BMS 10-11, Type 2 beige enamel (F-21.26-8925), which replaces SRF-14.903-8925) all over.

Refinish Details  
 Figure 601 (Sheet 1)

# 56-11-21

REPAIR 4-1

01.1

Page 602

Jul 01/04


**BOEING**  
 COMPONENT  
 MAINTENANCE MANUAL

IPL FIG. & ITEM	MATERIAL	FINISH
Brackets (302A)	Al alloy	Chemical treat and apply BMS 10-11, Type 1 primer (F-18.06). Apply BMS 10-11, Type 2 beige enamel (F-21.26-8925, which replaces SRF-14.903-8925) all over.
Couplings (230, 240)	15-5PH CRES 150-170 ksi	Cadmium plate and apply BMS 10-11, Type 1 primer (F-16.01) all over.
Channel (345A, 350A)	Al alloy	Chromic acid anodize and apply BMS 10-11, Type 1 primer (F-18.13) and BMS 10-11, Type 2 beige enamel, (F-21.26-8925, which replaces SRF-14.903-8925) all over.
Filler (355)	Al alloy	Chemical treat and apply BMS 10-11, Type 1 primer (F-18.06) all over.)
Brackets (615, 620)	Al alloy	Chromic acid or sulfuric acid anodize (F-17.05). Apply BMS 10-11, Type 1 primer (F-20.02) and BMS 10-11, Type 2 beige enamel (F-21.26-8925, which replaces SRF-14.903-8925) all over.
Shafts (820, 830)	4130 steel 150-170 ksi	Cadmium plate and apply BMS 10-11, Type 1 primer (F-16.01) all over.
Nut (885)	15-5PH CRES 150-170 ksi	Passivate (F-17.25, which replaces F-17.09).

Refinish Details  
 Figure 601 (Sheet 2)

**56-11-21**

REPAIR 4-1

01.1

Page 603

Jul 01/04

IPL FIG. & ITEM	MATERIAL	FINISH
Washer (890)	301 CRES	Passivate (F-17.25, which replaces F-17.09).
Spring (895)	17-7PH CH900	Passivate (F-17.25, which replaces F-17.09).
Cylinder (915A), plate (920A)	15-5PH CRES 150-170 ksi	Apply BMS 10-11, Type 1 primer (F-20.02) and BMS 10-72 dark brown enamel (F-22.03-8924 as shown in Fig. 604.
Bolt (925)	A286 steel	Apply BMS 3-8, class A solid film lubricant (F-19.10) to grip range only (includes underside of head). Do not apply this lubricant to threads or wrenching surfaces.

Refinish Details  
Figure 601 (Sheet 3)

**56-11-21**

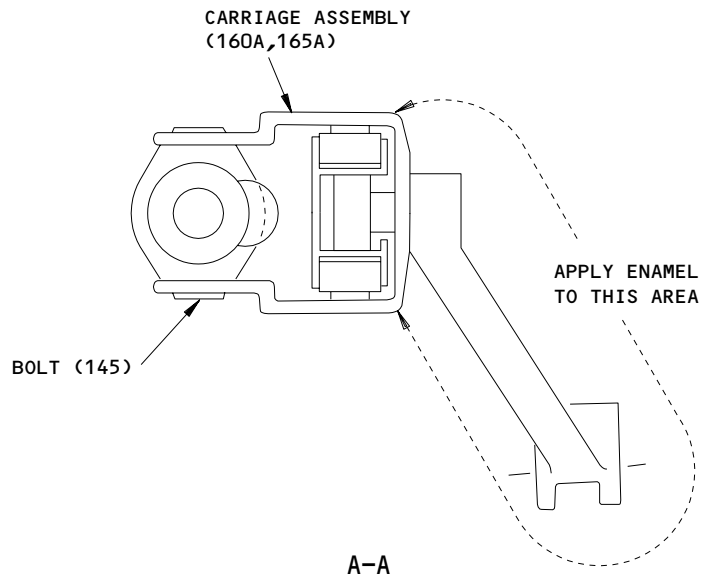
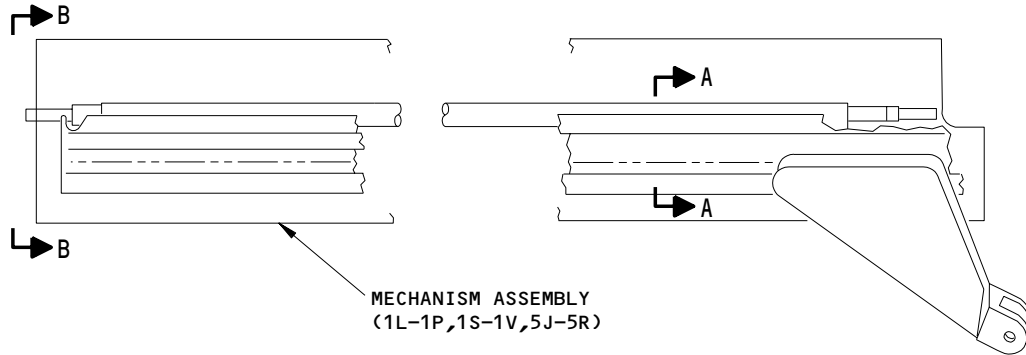
REPAIR 4-1

01.1

Page 604

Jul 01/04





141T4843-47, -48, -51, -52, -58, -59, -60, -507 THRU -513, -516, -517

Operating Mechanism Assembly Refinish  
Figure 602 (Sheet 1)

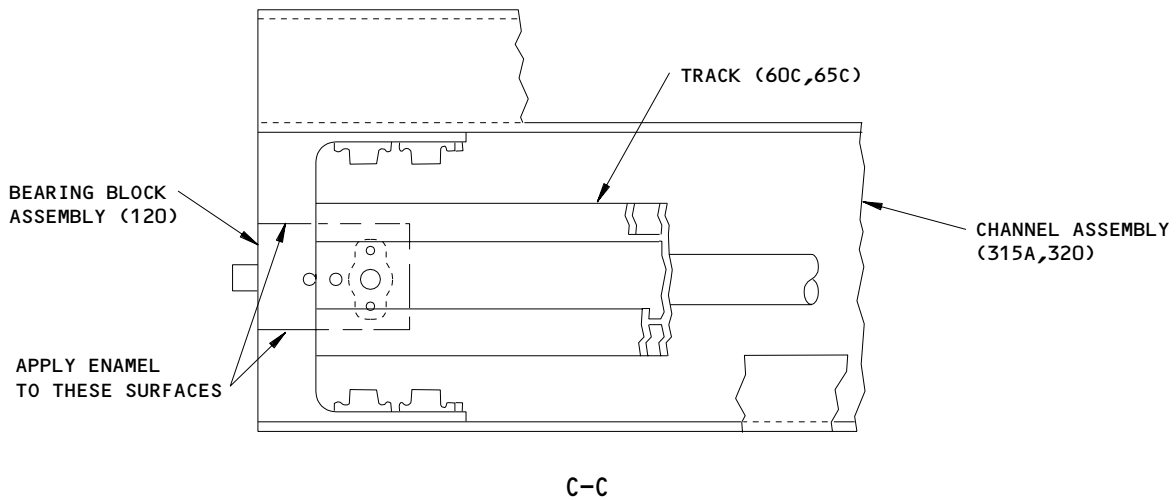
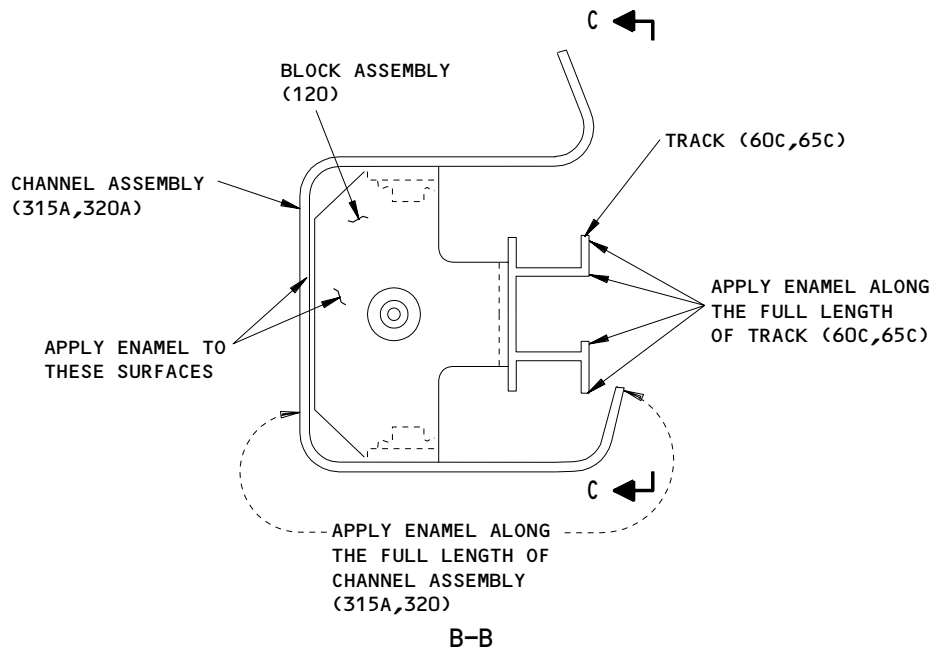
**56-11-21**

REPAIR 4-1

Page 605

Jul 01/04

01.1



141T4843-47,-48,-51,-52,-58,-59,-60,-507 THRU -513,-516,-517

Operating Mechanism Assembly Refinish  
 Figure 602 (Sheet 2)

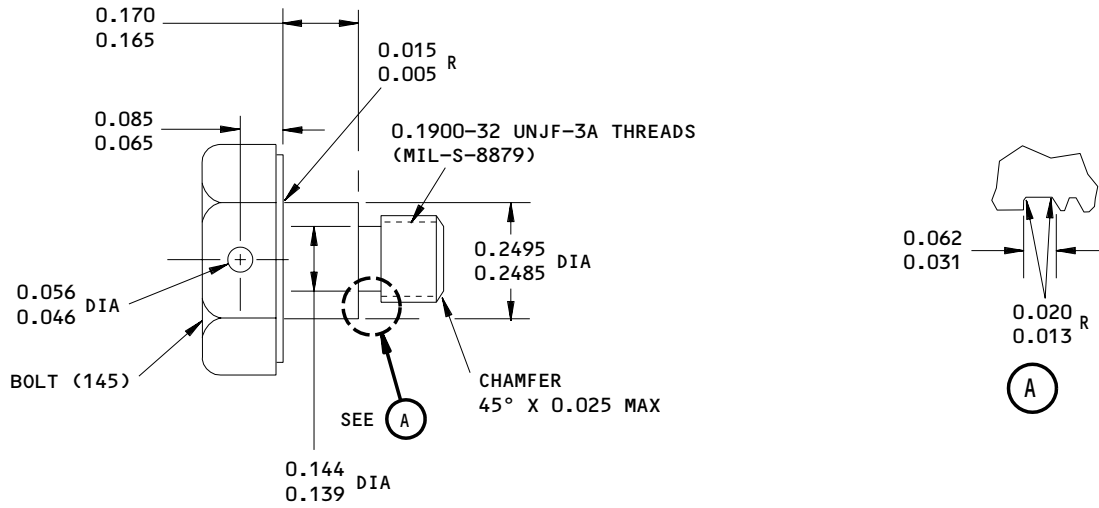
**56-11-21**

REPAIR 4-1

Page 606

Jul 01/04

01.1



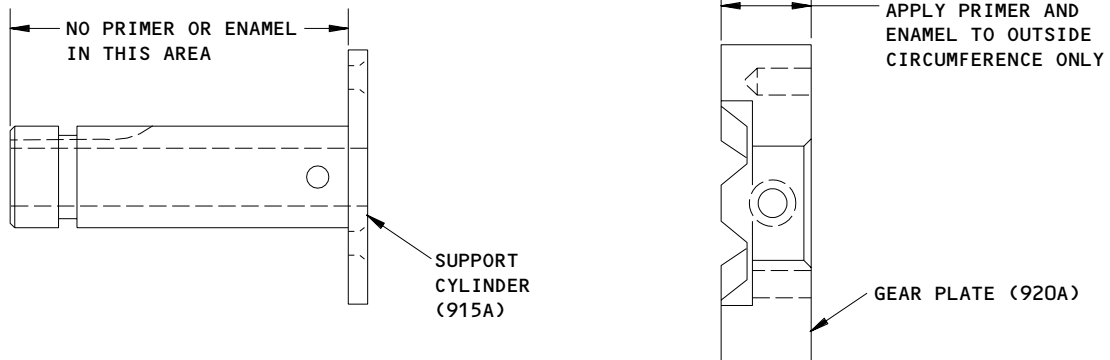
125/ ALL MACHINED SURFACES UNLESS SHOWN DIFFERENTLY

ALL DIMENSIONS AFTER PLATING

ALL DIMENSIONS ARE IN INCHES

141T4923-1  
Bolt Refinish  
Figure 603

58656



141T4888-13,-14  
Handle Components Refinish  
Figure 604

59267

**56-11-21**

REPAIR 4-1

01.1

Page 607

Jul 01/04

ASSEMBLY1. Materials

| NOTE: Equivalent substitutes can be used.

| A. Adhesive (SOPM 20-50-12)

| (1) Type 58

| (2) Type 70

| B. Compound, corrosion preventive -- MIL-C-16173, grade 2 (Ref 20-60-02)

| C. Compound, retaining -- MIL-S-46163, Type 2, grade M (Ref 20-60-04)

| D. Grease (SOPM 20-60-03)

| (1) BMS 3-24

| (2) BMS 3-33

| (3) MIL-G-23827

| E. Lockwire (SOPM 20-60-04)

| (1) MS20995C20

| (2) MS20995C32

| F. Lubricant -- Moly Lube Spray Powder (Ref 20-60-03)

| G. Sealant -- BMS 5-95 (SOPM 20-60-04)

2. Assembly (IPL Fig. 1)

| A. Use standard industry practices and these steps.

| B. Assemble carriage assembly (160A, 165A).

| (1) If you replaced carriage (220A), drill a hole in the replacement carriage for the lockwire (Fig. 701).

**56-11-21**ASSEMBLY  
Page 701  
Jul 01/04

01.1

- (2) Install spacers (180, 200).
- (3) Install rollers (205), with washers (195). Tighten nut (190) to 30-50 pound-inches. Make sure rollers (205) turn freely.
- (4) Install bearings (185), attaching bracket (210A, 215A) to carriage (220A). Use new washers (175, 177). Tighten nuts (170) to 60-95 pound-inches. Make sure bearings (185) turn freely.

C. Assemble channel assembly (315A, 320A).

- (1) Attach nutplates (335, 340) to channel (345A, 350A) using wet BMS 5-95 sealant.

D. Assemble bracket assembly (645A, 650A).

- (1) Attach nutplates (705, 710) to bracket (715A, 720A) with wet BMS 5-95 sealant on mating surfaces.
- (2) Install new rivets (705).

E. Assemble crank handle assembly (870B).

- (1) Attach knob (930) to crank handle (900) with bolt (925). Tighten bolt (925) to 20 pound-inches. Make sure the knob turns freely.
- (2) Attach cylinder (915A) to gear plate (920A) with screws (910), with retaining compound on threads (SOPM 20-50-12).
- (3) Install crank handle (900), spring (895), lockwasher (890), and nut (885) on cylinder (915A). Tighten or loosen nut (885) until a torque of 150-170 pound-inches applied at the crank handle (900) is necessary to move the crank handle (900) relative to the gear plate (920A). Bend lockwasher (890) to hold nut (885) in this position.

F. Assemble mechanism assembly (1, 5).

**NOTE:** You can partially and temporarily assemble the mechanism assembly now. But final assembly and adjustment to gage points must be done at installation in the aircraft.

- (1) Filler (355) will be temporarily installed on the aircraft. Attach a tag to the filler stating "Remove filler (Boeing P/N 141T4914-3) when cab drip shield (Boeing P/N 232T1301) is installed."
- (2) Bond spacer (635, 640) to aft bracket (615, 620) with Type 70 adhesive (SOPM 20-50-12).
- (3) Install bearing block assembly (120) in channel assembly (315A, 320A). Use shims (102) as necessary.

**56-11-21**

ASSEMBLY  
Page 702  
Jul 01/04

01.1

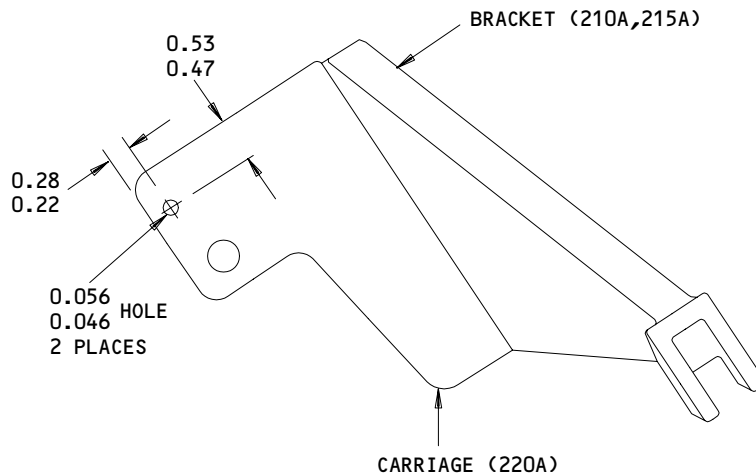
**BOEING**  
COMPONENT  
MAINTENANCE MANUAL

- (4) If you replaced bearing block assembly (120), put track (60C, 65C) over new bearing block assembly (120) as shown in Fig. 702. With the track in position, drill the hole for bolt (10A), with the hole in track (60C, 65C) as a guide.
- (5) Apply BMS 3-33 or MIL-G-23827 grease to the threads of ball screw (225).
- (6) If SB 56-0001 is incorporated, lockwire the wiper assembly to the ball screw nut (225) and capscrew with M20995C20 lockwire (SOPM 20-50-02).
- (7) Install the flange (155) on the ball screw nut (225) with a thin layer of MIL-C-16173, grade 2 corrosion preventive compound on mating threads.
- (8) Attach carriage assembly (160A, 165A) to ball screw flange (155) with bolts (145) and washers (150). Install and tighten the setscrew (140). Lockwire bolts to carriage assembly with MS20995C32 lockwire (SOPM 20-50-02).
- (9) Attach couplings (230, 240) and spacer (235) to gearbox (270).
  - (a) Optional -- Bond spacer (235) to couplings (230, 240) with Type 58 adhesive, to the dimensions shown (Fig. 703).
  - (b) If you replaced gearbox (270), drill 0.125-0.129 inch diameter holes through the shaft, with the holes in coupling (240) as guides. (See Fig. 703). Install fasteners (735, 745, 750).
- (10) If you replaced channel assembly (315A, 320):
  - (a) Attach bracket (302) to the replacement channel assembly (315A, 320) to dimensions shown in Fig. 704.
  - (b) Put the bracket assembly (645A, 650A) into the channel assembly (315A, 320A). Drill a 0.190-0.199 inch diameter hole for screws (285) with the hole in the bracket assembly as a guide. (See Fig. 704). Temporarily install screw (285), washer (295), and nut (300).
  - (c) Drill a 0.190-0.199 inch diameter hole for bolt (282) with the hole in the bracket assembly (645A, 650A) as a guide.
  - (d) Remove the screw (285), washer (295), nut (300) and bracket assembly (645A, 650A) from the channel assembly (315A, 320A).

**56-11-21**ASSEMBLY  
Page 703  
Jul 01/04

01.1

- (11) Fay surface seal radius filler (675) to bracket assembly (645A, 650A) with BMS 5-95 sealant.
- (12) If you replaced bolt (250A), temporarily attach gearbox (270), and shims (265) to bracket assembly (645A, 650A), and remove the minimum possible material from the head of the new bolt to clear track (60C, 65C).
- (13) If you replaced universal joints (275, 755, 795), shafts (820, 830), or gear boxes (270, 775, 865), drill 0.125-0.129 inch diameter holes for pins (735, 740, 780, 800) as shown in Fig. 705. Install pins (735, 740, 780, 800) with their washers and cotter pins.
- (14) If you replaced filler (860), install it as shown in Fig. 705.
- (15) If you replaced gearbox (865), drill a hole to attach handle assembly (870B) to the gearbox as shown in Fig. 705.



ALL DIMENSIONS ARE IN INCHES

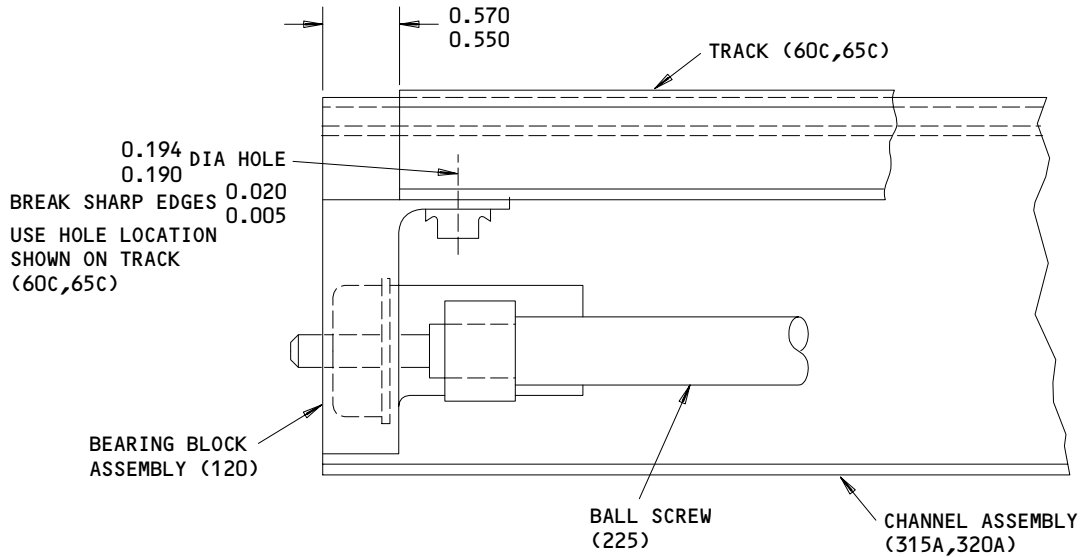
Carriage Drilling Dimensions  
Figure 701

59271

**56-11-21**

01.1

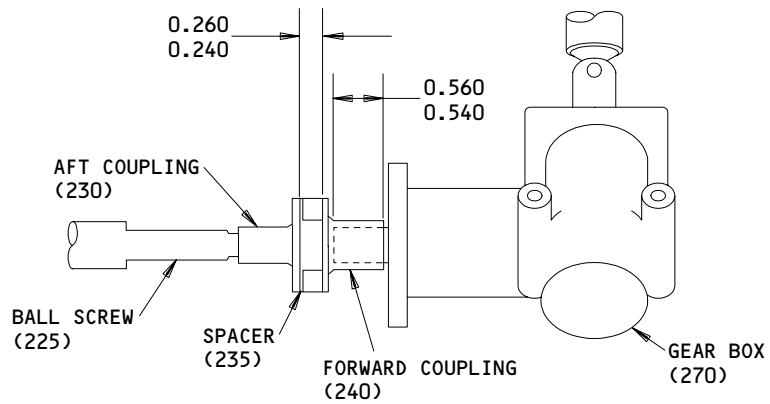
ASSEMBLY  
Page 704  
Jul 01/04



ALL DIMENSIONS ARE IN INCHES

Bearing Block Assembly Placement  
Figure 702

59273



ALL DIMENSIONS ARE IN INCHES

Gear Box Placement  
Figure 703

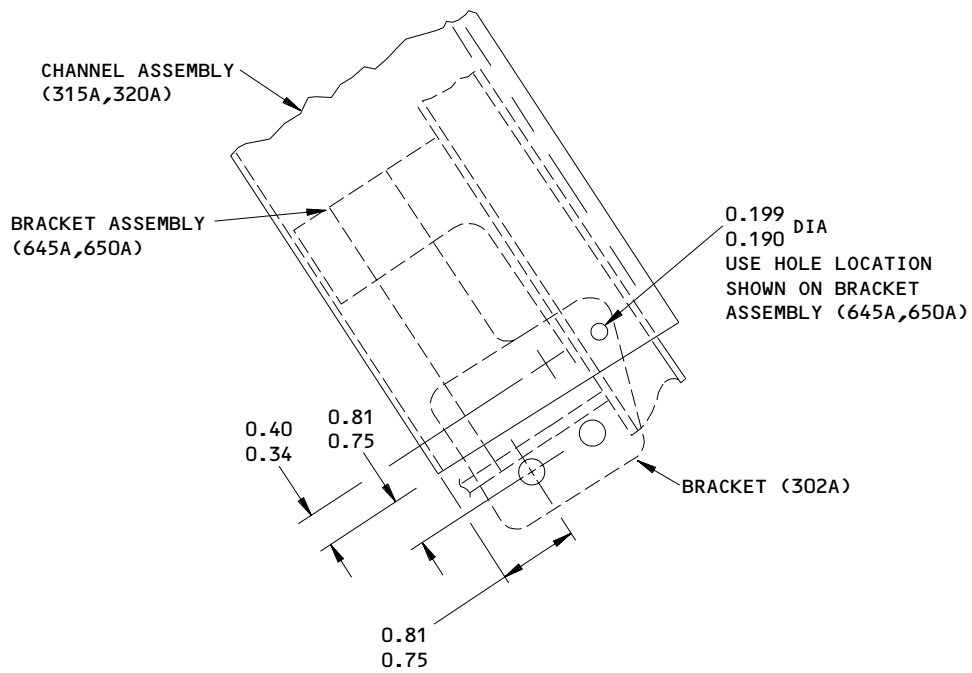
59274

**56-11-21**

ASSEMBLY  
Page 705  
Jan 01/92

01.1





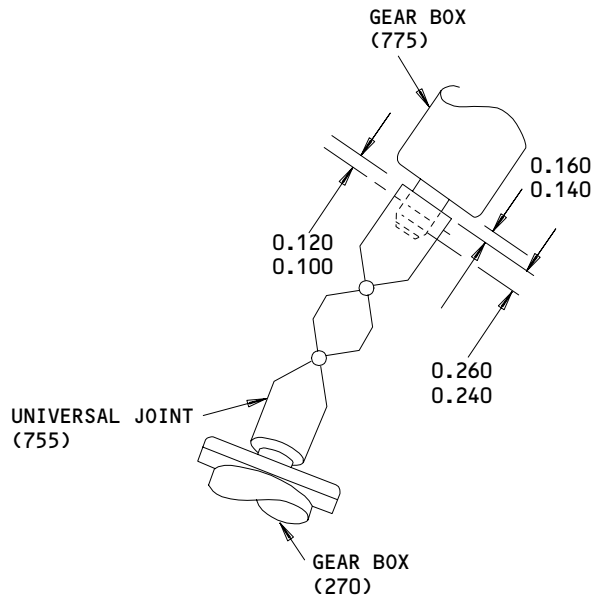
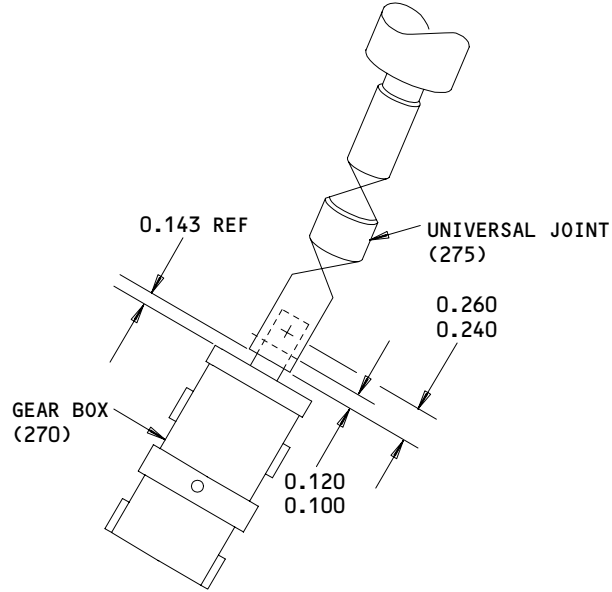
ALL DIMENSIONS ARE IN INCHES

Bracket Replacement  
Figure 704

**56-11-21**

ASSEMBLY  
Page 706  
Jul 01/04

01.1



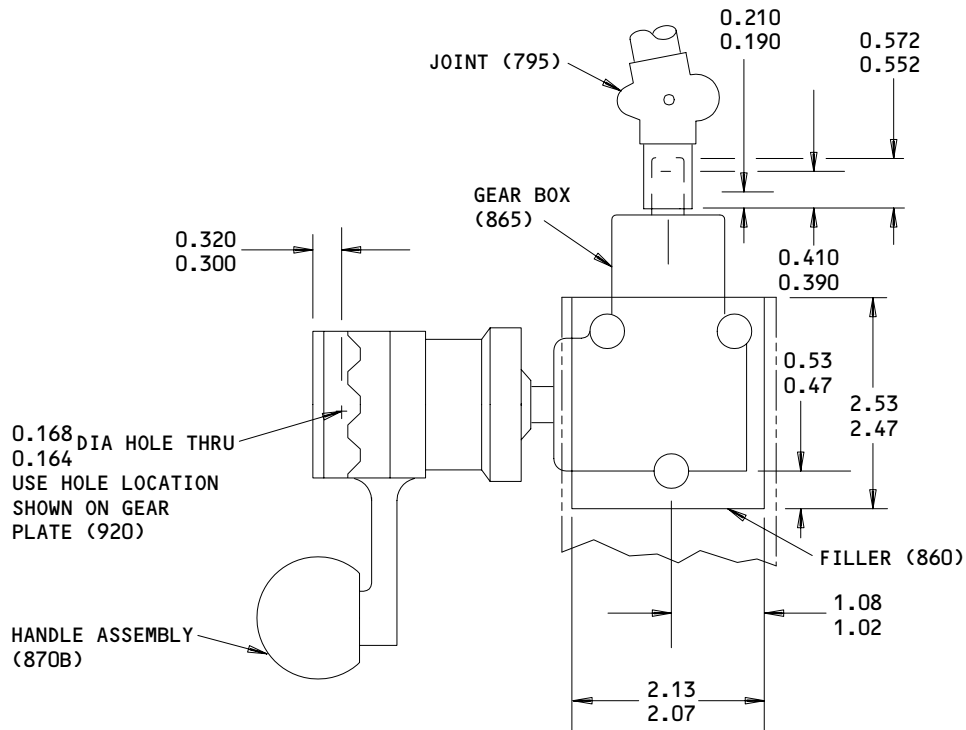
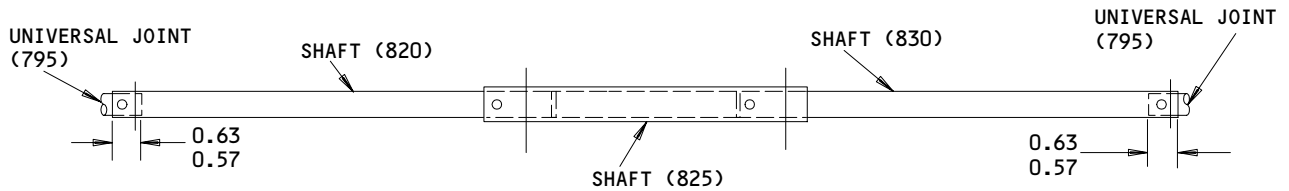
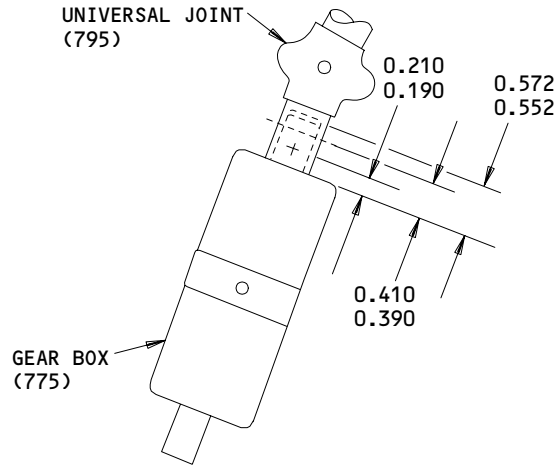
ALL DIMENSIONS ARE IN INCHES

Component Replacement Dimensions  
Figure 705 (Sheet 1)

**56-11-21**

ASSEMBLY  
Page 707  
Jan 01/92

01.1



ALL DIMENSIONS ARE IN INCHES

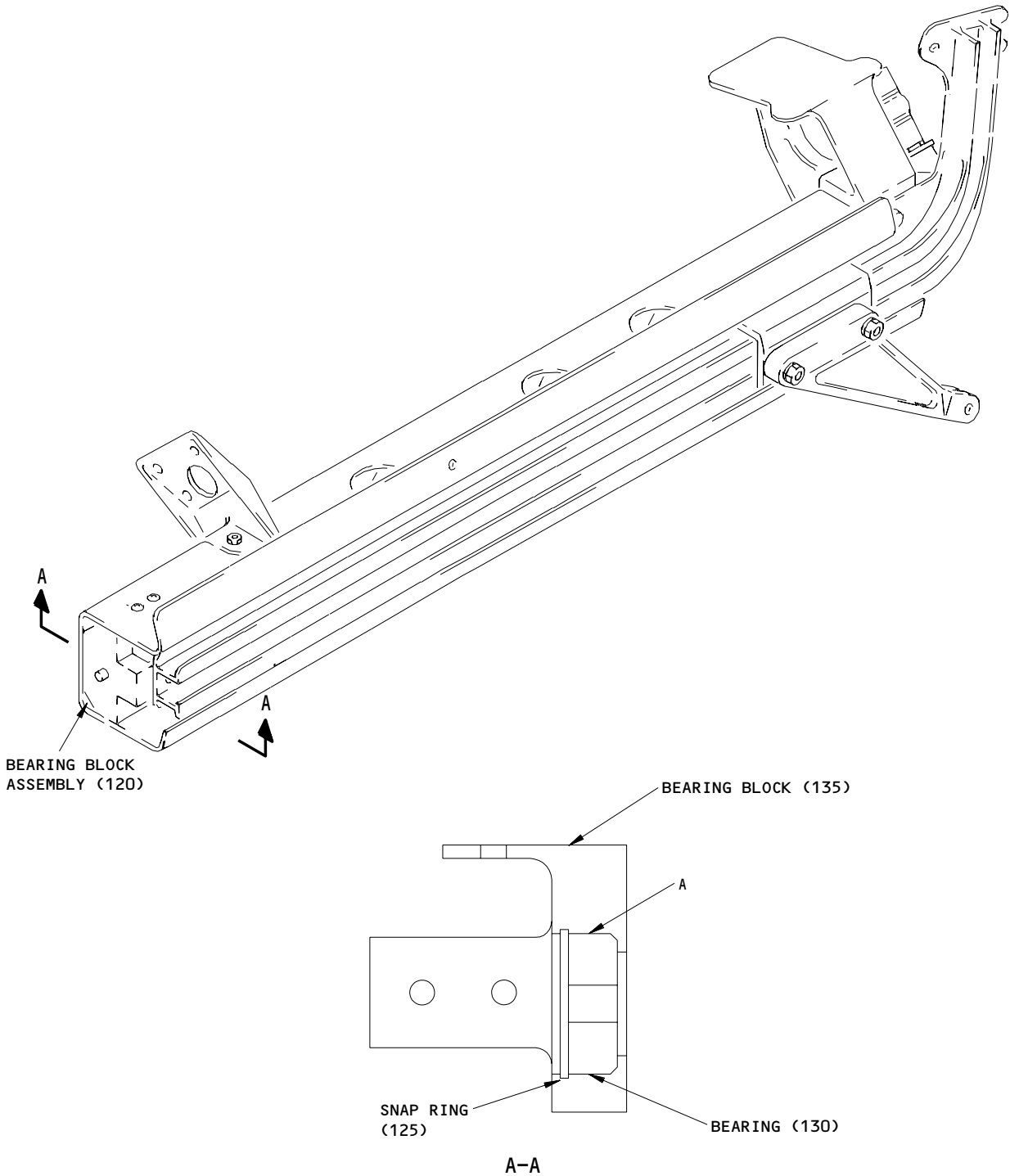
Component Replacement Dimensions  
 Figure 705 (Sheet 2)

**56-11-21**

ASSEMBLY  
 Page 708  
 Jan 01/92

01.1

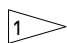
FITS AND CLEARANCES

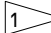


Fits and Clearances  
Figure 801 (Sheet 1)

**56-11-21**

FITS AND CLEARANCES  
01.1 Page 801  
Jul 01/04

Ref Letter Fig.801	Mating Item No. IPL Fig.1	Design Dimensions				Service Wear Limit		
		Dimensions		Assembly Clearance 		Dimensions		Maximum Clearance
		Min	Max	Min	Max	Min	Max	
A	ID 135 OD 130	0.9990 0.9995	1.0000 1.0000	-0.0010	0.0005	0.9970	1.0025	0.0050

 NEGATIVE VALUES ARE IN INTERFERENCE FIT  
ALL DIMENSIONS ARE IN INCHES

Fits and Clearances  
Figure 801 (Sheet 2)

190931

FOR TORQUE VALUES OF STANDARD FASTENERS, REFER TO SOPM 20-50-01			
ITEM NO. IPL FIG. 1	NAME	TORQUE	
		POUND-INCHES	POUND-FEET
170	Nut	60-95	
190	Nut	30-50	
925	Bolt	20	

Torque Table  
Figure 802

**56-11-21**

ILLUSTRATED PARTS LIST

1. This section lists and illustrates replaceable or repairable component parts. The Illustrated Parts Catalog contains a complete explanation of the Boeing part numbering system.

2. Indentures show parts relationships as follows:

Assembly

Detail Parts for Assembly

Subassembly

Attaching Parts for Subassembly

Detail Parts for Subassembly

Detail Installation Parts (Included only if installation parts may be returned to shop as part of assembly)

3. One use code letter (A, B, C, etc.) is assigned in the EFF CODE column for each variation of top assembly. All listed parts are used on all top assemblies except when limitations are shown by use code letter opposite individual part entries.

4. Letter suffixes (alpha-variants) are added to item numbers for optional parts, Service Bulletin modification parts, configuration differences (except left- and right-hand parts), product improvement parts, and parts added between two sequential item numbers. The alpha-variant is not shown on illustrations when appearance and location of all variants of the part is the same.

5. Service Bulletin modifications are shown by the notations PRE SB XXXX and POST SB XXXX.

A. When a new top assembly number is assigned by Service Bulletin, the notations appear at the top assembly level only. The configuration differences at detail part level are then shown by use code letter.

B. When the top assembly part number is not changed by the Service Bulletin, the notations appear at the detail part level.

6. Parts Interchangeability

Optional  
(OPT)

The parts are optional to and interchangeable with other parts having the same item number.

Supersedes, Superseded By  
(SUPSDS, SUPSD BY)

The part supersedes and is not interchangeable with the original part.

Replaces, Replaced By  
(REPLS, REPLD BY)

The part replaces and is interchangeable with, or is an alternate to, the original part.

**56-11-21**

ILLUSTRATED PARTS LIST

01

Page 1001

Jul 10/83

VENDORS

S0352 NIPPON MINIATURE BEARING CO LTD  
TOKYO, JAPAN

OPTK6 SPS TECHNOLOGIES INC AEROSPACE PRODUCTS DIV  
5195 W 4700 SPO BOX 18459  
KEARNS, UTAH 84118

06725 AIR INDUSTRIES CORPORATION  
12570 KNOTT STREET  
GARDEN GROVE, CALIFORNIA 92641-3932  
FORMERLY AIR INDUSTRIES OF CALIF IN GARDENA, CALIF.

06950 SCREWCORP VSI AEROSPACE PRODUCTS DIV FAIRCHILD IND DIV  
13001 EAST TEMPLE AVENUE PO BOX 730  
CITY OF INDUSTRY, CALIFORNIA 91746-1417  
FORMERLY VB0096 AND VSI CORP SCREWCORP DIV  
FORMERLY IN CULVER CITY, CALIFORNIA

08524 DEUTSCH FASTENER CORP SEE CODE V97928

10630 ANILLO INDUSTRIES, INCORPORATED  
2090 NORTH GLASSELL  
ORANGE, CALIFORNIA 92667  
FORMERLY WESTERN WASHER DIV OF SENG CO V87487

11815 CHERRY AEROSPACE FASTENERS DIV OF TEXTRON  
1224 EAST WARNER AVENUE PO BOX 2157  
SANTA ANA, CALIFORNIA 92707-0157  
FORMERLY IN LOS ANGELES, CALIF, FORMERLY CHERRY FASTENERS  
TOWNSEND DIV OF TEXTRON INC V71087

15653 ALOCA GLOBAL FASTEMERS INC DIV KAYNARE PRODUCTS  
800 S STATE COLLEGE BLVD  
FULLERTON, CALIFORNIA 92831-3001  
FORMERLY VK6405 MICRODOT AEROSP LTD; FORMERLY KAYNAR TECH  
FORMERLY FAIRCHILD FASTENERS KAYNAR DIV

17446 HUCK INTL INC AEROSPACE FASTENER DIV  
900 WATSON CENTER ROAD  
CARSON, CALIFORNIA 90745-4201  
FORMERLY V32134 REXNORD INC; FORMERLY V97928 HUCK INTL

52504 FENNER AMERICA LTD RUSSELL MFG DIV  
MIDDLETOWN, CONNECTICUT 06457-4509  
OBSOLETE FACILITIES DISCONTINUED

56-11-21

ILLUSTRATED PARTS LIST  
01.1 Page 1002  
Jul 01/04


**BOEING**  
 COMPONENT  
 MAINTENANCE MANUAL
VENDORS

52828 REPUBLIC FASTENER MFG CORP  
 1300 RANCHO CONEJO BLVD  
 NEWBURY PARK, CALIFORNIA 91320-1405  
 FORMERLY IN SYLMAR, CALIFORNIA

56878 SPS TECHNOLOGIES INC AEROSPACE AND INDUSTRIAL PRODUCTS DIV  
 301 HIGHLAND AVE  
 JENKINTOWN, PENNSYLVANIA 19046  
 FORMERLY STANDARD PRESSED STEEL

60380 TORRINGTON CO BEARINGS DIV SUBSIDIARY OF INGERSOLL-RAND CORP  
 59 FIELD STREET PO BOX 1008  
 TORRINGTON, CONNECTICUT 06790-1008  
 FORMERLY TORRINGTON BEARING COMPANY

60516 WEST COAST AEROSPACE INC  
 812 MIRAFLORES STREET  
 SAN PEDRO, CALIFORNIA 90731-1439

71087 BOOTS ACFT NUT DIV TOWNSEND CO SEE TEXTRON INC CHERRY  
 FASTENER TOWNSEND DIV V11815

72962 HARVARD INDUSTRIES INC  
 3 WERNER WAY SUITE 210  
 LEBANON, NEW JERSEY 08833  
 FORMERLY AMERACE CORP ESNA DIV  
 FORMERLY ELASTIC STOP NUT IN UNION, NJ

73197 HI-SHEAR TECHNOLOGY CORP  
 2600 SKYPARK DRIVE  
 TORRANCE, CALIFORNIA 90509

77896 REXNORD INC BEARING OPERATION  
 2400 CURTIS STREET  
 DOWNERS GROVE, ILLINOIS 60515-4005  
 FORMERLY SHAEFER BEARING DIV REX CHAINBELT  
 FORMERLY REX CHAINBELT INC BEARING DIV.

80539 SPS TECHNOLOGIES INC DIV AERPSOACE - SANTA ANA  
 2701 SOUTH HARBOR BOULEVARD  
 SANTA ANA, CALIFORNIA 92704-5803  
 FORMERLY NUTT-SHEL DIV OF SPC WESTERN CO V80539  
 AND STANDARD PRESSED STEEL WESTERN DIV V17279

56-11-21

 ILLUSTRATED PARTS LIST  
 01.1 Page 1003  
 Jul 01/04



VENDORS

81039 SMITHS INDUSTRIES ACTUATION SYSTEMS INC  
110 ALGONQUIN PKY  
WHIPPANY, NEW JERSEY 07981-1640  
FORMERLY AIRBORNE ACCESSORIES CORP; PLESSEY DYNAMICS CORP;  
FORMERLY GEC/UK/AEROSPACE

84256 AVIBANK MANUFACTURING COMPANY  
210 SOUTH VICTORY BLVD PO BOX 391  
BURBANK, CALIFORNIA 91503  
FORMERLY AVDEL INC AND ROWE SALES CO VB0001  
FORMERLY PRICE, D.W. CORP LOS ANGELES, CALIFORNIA V97978

92215 FAIRCHILD IND INC FAIRCHILD AEROSPACE FASTENER DIV  
3010 W LOMITA BLVD  
TORRANCE, CALIFORNIA 90505-5102  
FORMERLY VOI-SHAN IN CULVER CITY, CALIF

97928 HUCK INTL SEE V17446 HUCK INTL  
SEE V17446 HUCK INTL  
SEE V17446 HUCK INTL

98889 TELAIR INTERNATIONAL  
1950 WILLIAMS DRIVE  
OXNARD, CALIFORNIA 93030  
FORMERLY TALLEY CORP, NEWBURY PARK DIV  
FORMERLY TELEFLEX CONTROL SYSTEMS

56-11-21

ILLUSTRATED PARTS LIST  
01.1 Page 1004  
Jul 01/04


**BOEING**  
 COMPONENT  
 MAINTENANCE MANUAL

PART NUMBER	AIRLINE PART NO.	FIG.	ITEM	TTL REQ
ACD5		1	755	1
AN960C4L		1	115A	1
		1	745A	8
		1	785A	4
		1	810A	8
AN960C416		1	40	1
AN960PD10		1	255	3
		1	295	6
		1	765	3
AN960PD10L		1	37	1
		1	92	4
		1	297	1
AN960PD416		1	195	4
AN960PD516		1	175	2
		1	177	4
		1	186L	4
		1	665	4
AN960416L		1	150	2
ASRD5-30B		1	695	1
ASRD5H30B		1	695	1
ASR4-30		1	130	1
AS46-3		1	850	3
BACB10CH50		1	695	1
BACB10CK4		1	130	1
BACB30NM3K14		1	30B	1
BACB30NM3K3		1	10A	1
		1	282	1
BACB30NM3K5		1	290	4
BACB30NM3K6		1	119L	1
BACB30NM4K14		1	610	4
BACB30NR4K14		1	360	1
BACB30NR4K4		1	25	1
BACB30NT3K25		1	250A	1
BACB30NT3K26		1	245	2
BACB30NT3K28		1	835	1
BACB30NT3K29		1	840	1
BACB30NT3K30		1	845	1
BACB30NX10K10		1	655	2
BACB30NX10K11		1	660	2
BACB30VF4K2		1	20B	1
BACB30VF4K3		1	15A	1
BACF3T01H21-25		1	860	1

56-11-21

ILLUSTRATED PARTS LIST

01.1

Page 1005

Jul 01/04

PART NUMBER	AIRLINE PART NO.	FIG.	ITEM	TTL REQ
BACN10GW5		1	670	4
BACN10JC08		1	880	1
BACN10JC3CM		1	55	1
BACN10JC3CM		1	260	3
		1	300	5
		1	770	3
BACN10JC4		1	190	4
BACN10JC4CM		1	375	1
BACN10JC5		1	170	2
BACN10JC5CM		1	725	1
BACN10JN3CM		1	75	1
		1	100	4
		1	335	5
		1	335A	3
		1	340	7
		1	710	1
BACN10JN4CM		1	705	3
BACN10JR3CFD		1	340A	7
BACN10MT3		1	855	3
BACR15BA3AD		1	35	1
		1	70	2
		1	95	8
BACR15BA4AD		1	280	1
BACR15BBA3AD		1	700A	8
BACR15DR3A		1	325A	10
		1	325B	6
		1	330A	14
BACS12CK3-8		1	90A	4
		1	285A	1
BACS12FA3K8		1	90	4
		1	285	1
BACS40R008D020F		1	102A	1
		1	119N	1

56-11-21

 ILLUSTRATED PARTS LIST  
 01.1 Page 1006  
 Jul 01/04


**BOEING**  
 COMPONENT  
 MAINTENANCE MANUAL

PART NUMBER	AIRLINE PART NO.	FIG.	ITEM	TTL REQ
BACS4OR012E012F		1	119Q	1
		1	685A	2
BACS4OR012E018F		1	119S	1
		1	680A	2
BACW10AU3		1	850	3
BACW10BP3P		1	50	2
BACW10BP4P		1	370	2
BAC3ONT3K23		1	760	3
BRFM20C3M		1	75	1
		1	100	4
		1	335	5
		1	335A	3
		1	340	7
		1	710	1
BRFM20C4M		1	705	3
BRF200C3D		1	340A	7
BRH10A08		1	880	1
BRH10A4		1	190	4
BRH10A5		1	170	2
BRH10C3M		1	55	1
		1	260	3
		1	300	5
		1	770	3
BRH10C4M		1	375	1
BRH10C5M		1	725	1
CC55147		1	205	4
CF2809		1	205A	4
DAS5-20A1-509		1	695	1
DAS5-20A4		1	695	1
DAS5-20A51		1	695	1
HL1012AZ10-10		1	655	2
HL1012AZ10-11		1	660	2
HL12VAZ10-10		1	655	2
HL12VAZ10-11		1	660	2

56-11-21

ILLUSTRATED PARTS LIST

01.1

Page 1007

Jul 01/04

PART NUMBER	AIRLINE PART NO.	FIG.	ITEM	TTL REQ
HRS3CAR16		1	185A	2
		1	187	2
H01-3BAC		1	55	1
		1	260	3
		1	300	5
		1	770	3
H01-4BAC		1	375	1
H01-5BAC		1	725	1
H10-08BAC		1	880	1
H10-4BAC		1	190	4
H10-5BAC		1	170	2
H19700P3		1	855	3
K19701P3		1	850	3
K51602-3BAC		1	340A	7
L802-10K10		1	655	2
L802-10K11		1	660	2
MF1001-3BAC		1	75	1
		1	100	4
		1	335	5
		1	335A	3
		1	340	7
		1	710	1
MF1001-4BAC		1	705	3
MF53050-3DL		1	75	1
		1	100	4
		1	335	5
		1	335A	3
		1	340	7
		1	710	1
MS16625-4100		1	125	1
MS16625-4125		1	690	1
MS20271B8		1	275	1
		1	795	2
MS20392-1C15		1	730	2
MS20392-1C17		1	780	4
MS20392-1C21		1	735	4
		1	800	4
MS20392-1C23		1	740	2
MS20392-1C25		1	110	1
		1	805	4

56-11-21

 ILLUSTRATED PARTS LIST  
 01.1 Page 1008  
 Jul 01/04


**BOEING**  
 COMPONENT  
 MAINTENANCE MANUAL

PART NUMBER	AIRLINE PART NO.	FIG.	ITEM	TTL REQ
MS21432-5R14A		1	185L	2
MS24665-1011		1	105	1
		1	750	8
		1	790	4
		1	815	8
MS24693C48		1	910	3
MS51021-113		1	140	1
NAS43DD4-7		1	200	4
NAS43DD5-13		1	180	2
NAS623-2-21		1	875	1
NS103218SE02		1	75	1
		1	100	4
		1	335	5
		1	335A	3
		1	340	7
		1	710	1
NS103218SE048		1	705	3
NS202101-048		1	190	4
NS202101-82		1	880	1
NS202101SE02		1	55	1
		1	260	3
		1	300	5
		1	770	3
NS202476-02		1	340A	7
RMLH9075-4W		1	190	4
RMLH9075-5W		1	170	2
RMLH9075-82W		1	880	1
R1141		1	865B	1
R1144		1	775B	1
R3000M15		1	270B	1
S141T491-1		1	865A	1
S141T491-3		1	775A	1
TLN1020-3N		1	855	3
TLN1020L3W		1	850	3
T6C1032JM		1	55	1
		1	260	3
		1	300	5
		1	770	3
T6C428JM		1	375	1
T6C524JM		1	725	1
T6S428J		1	190	4
T6S524J		1	170	2
T6S832J		1	880	1

56-11-21

ILLUSTRATED PARTS LIST

01.1

Page 1009

Jul 01/04

PART NUMBER	AIRLINE PART NO.	FIG.	ITEM	TTL REQ
T8092C1032CD		1	340A	7
T8125C3C		1	75	1
		1	100	4
		1	335	5
		1	335A	3
		1	340	7
		1	710	1
T8125C4C		1	705	3
VN252D02		1	75	1
VN252D02		1	100	4
		1	335	5
		1	335A	3
		1	340	7
		1	710	1
VN252D048		1	705	3
VN303A048		1	190	4
VN303A82		1	880	1
VN303D02		1	55	1
		1	260	3
		1	300	5
		1	770	3
VN303D048		1	375	1
XB0100		1	775A	1
OR1144		1	775A	1
102F9201-3		1	340A	7
109F9201M3		1	75	1
		1	100	4
		1	335	5
		1	335A	3
		1	340	7
		1	710	1

# 56-11-21

 ILLUSTRATED PARTS LIST  
 01.1 Page 1010  
 Jul 01/04


**BOEING**  
 COMPONENT  
 MAINTENANCE MANUAL

PART NUMBER	AIRLINE PART NO.	FIG.	ITEM	TTL REQ
109F9201M4		1	705	3
109LH9075-3W		1	55	1
		1	260	3
		1	300	5
		1	770	3
109LH9075-4W		1	375	1
109LH9075-5W		1	725	1
141T4843-11		1	600	1
141T4843-12		1	605	1
141T4843-13		1	20	1
141T4843-47		1	1S	RF
141T4843-48		1	5N	RF
141T4843-5		1	270A	1
141T4843-5001		1	118	1
141T4843-5002		1	118A	1
141T4843-5003		1	118H	1
141T4843-5004		1	118J	1
141T4843-5005		1	118B	1
141T4843-5006		1	118K	1
141T4843-507		1	1L	RF
141T4843-508		1	5J	RF
141T4843-509		1	1M	RF
141T4843-51		1	1T	RF
141T4843-510		1	5K	RF
141T4843-511		1	1N	RF
141T4843-512		1	5L	RF
141T4843-513		1	1P	RF
141T4843-514		1	20A	1
141T4843-516		1	5M	RF
141T4843-517		1	1R	RF
141T4843-52		1	5P	RF
141T4843-58		1	5Q	RF
141T4843-59		1	1U	RF
141T4843-60		1	5R	RF
141T4843-65		1	1V	RF

56-11-21

ILLUSTRATED PARTS LIST

01.1

Page 1011

Jul 01/04



PART NUMBER	AIRLINE PART NO.	FIG.	ITEM	TTL REQ
141T4843-66		1	5S	RF
141T4843-68		1	5T	RF
141T4843-9		1	675	2
141T4848-501		1	60C	1
141T4848-502		1	65C	1
141T4877-1		1	615	1
141T4877-2		1	620	1
141T4879-19		1	315A	1
141T4879-20		1	320A	1
141T4879-21		1	345A	1
141T4879-22		1	350A	1
141T4879-25		1	315B	1
141T4882-3		1	930	1
141T4882-5		1	925	1
141T4882-7		1	870B	1
141T4883-10		1	165E	1
141T4883-13		1	186	2
141T4883-3		1	160A	1
141T4883-4		1	165A	1
141T4883-501		1	160B	1
141T4883-502		1	165B	1
141T4883-9		1	160E	1
141T4885-10		1	720A	1
141T4885-7		1	645A	1
141T4885-8		1	650A	1
141T4885-9		1	715A	1
141T4887-1		1	120	1
141T4887-5		1	135	1
141T4888-11		1	900	1
141T4888-13		1	915A	1
141T4888-14		1	920A	1
141T4888-4		1	905	1
141T4888-6		1	885	1
141T4888-7		1	890	1
141T4889-3		1	220A	1
141T4889-501		1	220B	1
141T4890-10		1	215A	1
141T4890-15		1	210C	1
141T4890-16		1	215C	1
141T4890-501		1	210B	1

# 56-11-21

 ILLUSTRATED PARTS LIST  
 01.1 Page 1012  
 Jul 01/04


**BOEING**  
 COMPONENT  
 MAINTENANCE MANUAL

PART NUMBER	AIRLINE PART NO.	FIG.	ITEM	TTL REQ
141T4890-502		1	215B	1
141T4890-9		1	210A	1
141T4891-3		1	825	1
141T4910-1		1	895	1
141T4914-3		1	355	1
141T4914-4		1	635	1
141T4914-5		1	640	1
141T4915-1		1	310	1
141T4915-2		1	305	1
141T4915-3		1	265	2
141T4918-2		1	225	1
141T4918-3		1	225B	1
141T4919-3		1	240	1
141T4919-4		1	230	1
141T4919-5		1	235	1
141T4920-2		1	155	1
141T4921-10		1	119K	1
141T4921-2		1	117	1
141T4921-3		1	119	1
141T4921-4		1	119A	1
141T4921-7		1	119E	1
141T4921-8		1	119J	1
141T4921-9		1	119B	1
141T4922-4		1	830	1
141T4922-5		1	820	1
141T4923-1		1	145	2
1894T100-1		1	775A	1
		1	865A	1
232T1434-19		1	80	1
232T1434-20		1	85	1
232T1434-29		1	302A	1
52LH6073-02		1	855	3
53488-1032		1	855	3
53488W1032		1	850	3
53676-1		1	870C	1
6073-0		1	850	3
9NS202101SE048		1	375	1
96-048		1	190	4
96-054		1	170	2
96-82		1	880	1
97E02		1	55	1
		1	260	3
		1	300	5
		1	770	3
97E054		1	725	1
97E48		1	375	1

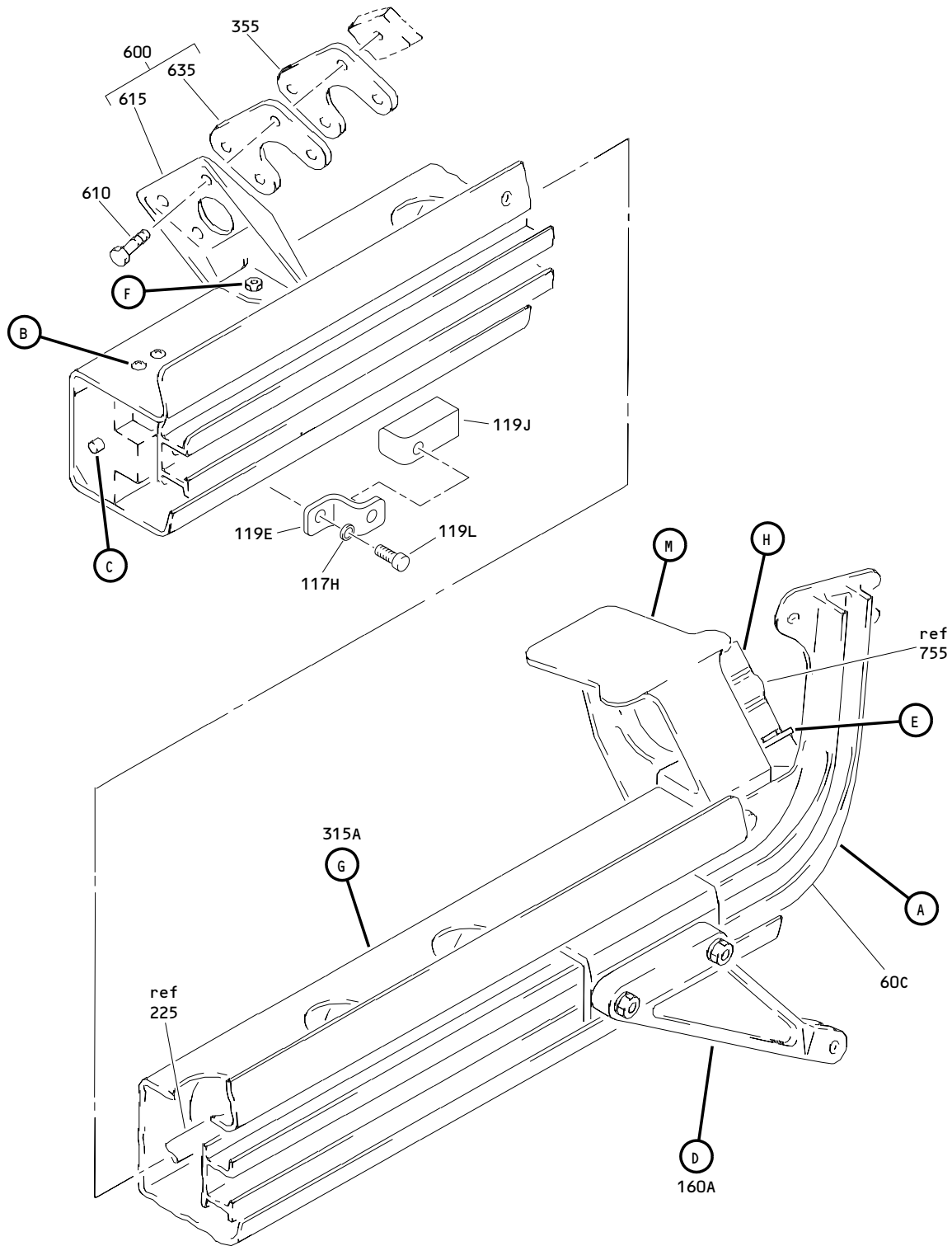
56-11-21

ILLUSTRATED PARTS LIST

01.1

Page 1013

Jul 01/04

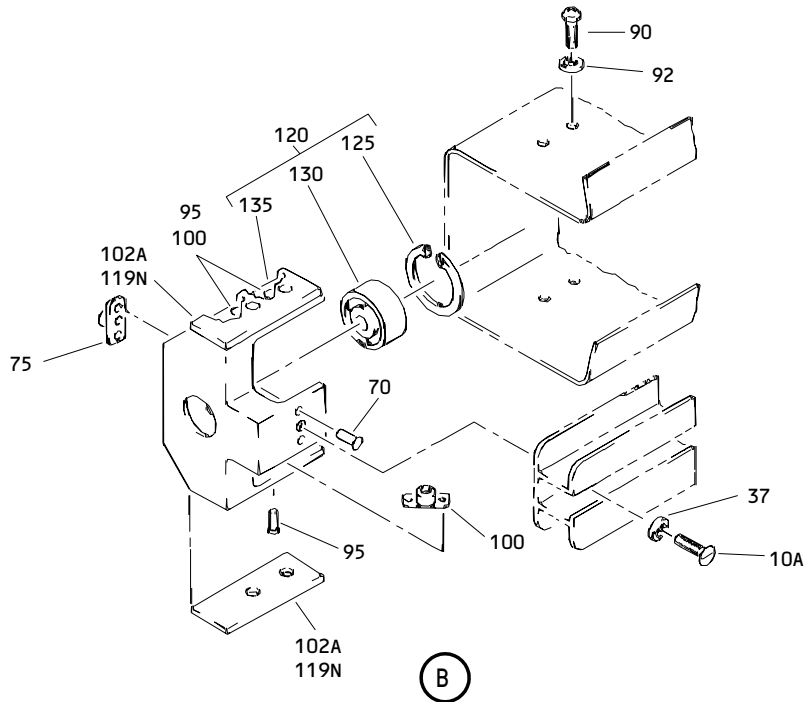
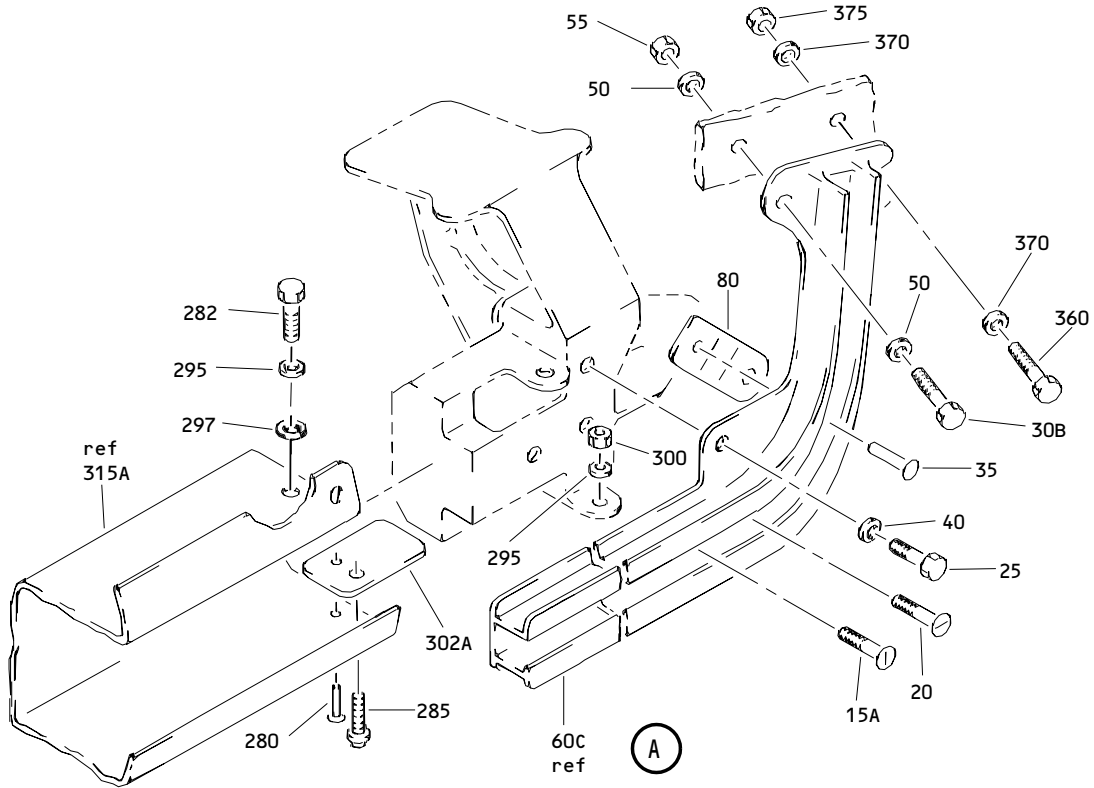


No. 2 Openable Window Operating Mechanism Assembly  
 Figure 1 (Sheet 1)

**56-11-21**

ILLUSTRATED PARTS LIST  
 01.1 Page 1014  
 Jul 01/04

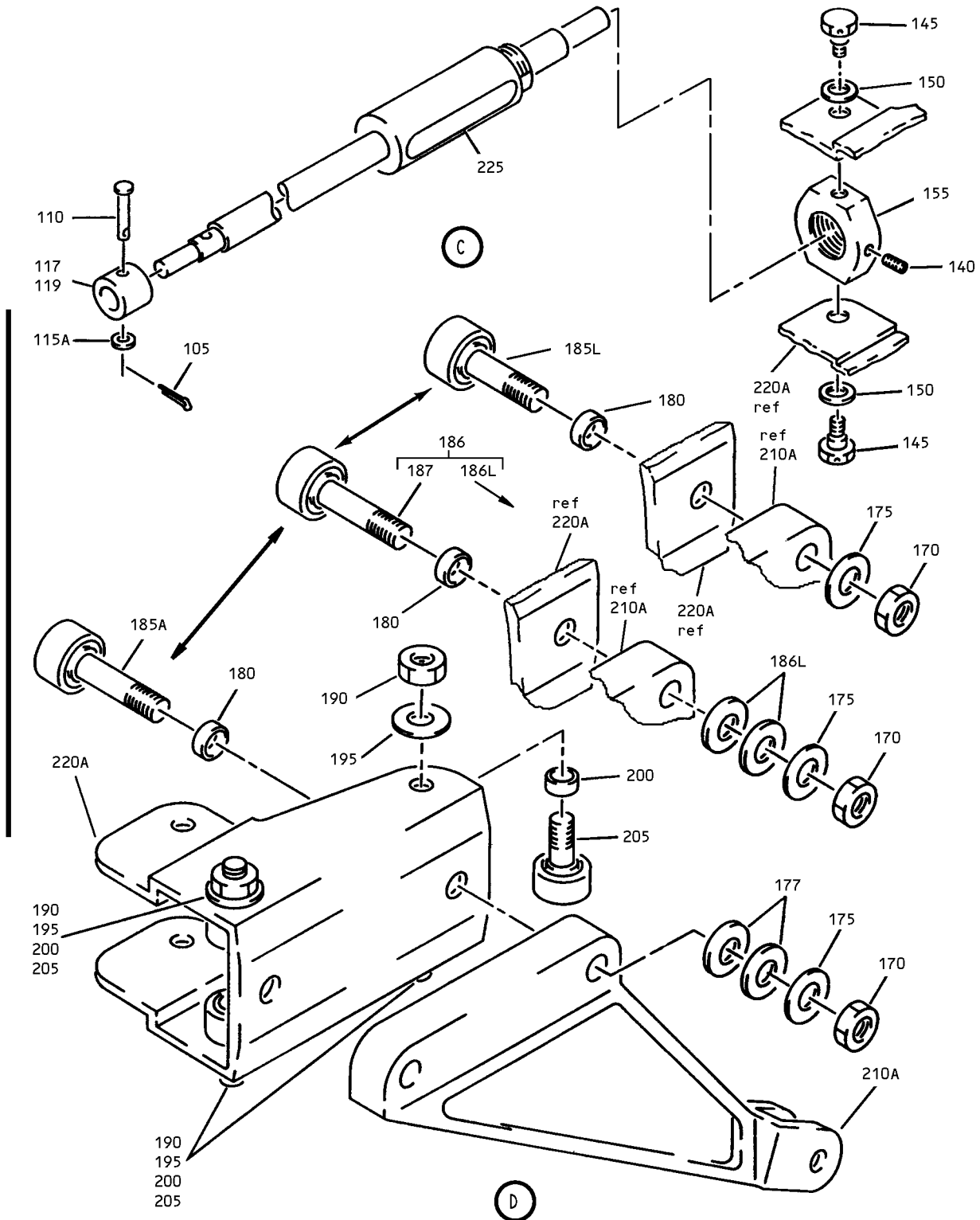
**BOEING**  
 COMPONENT  
 MAINTENANCE MANUAL



No. 2 Openable Window Operating Mechanism Assembly  
 Figure 1 (Sheet 2)

**56-11-21**

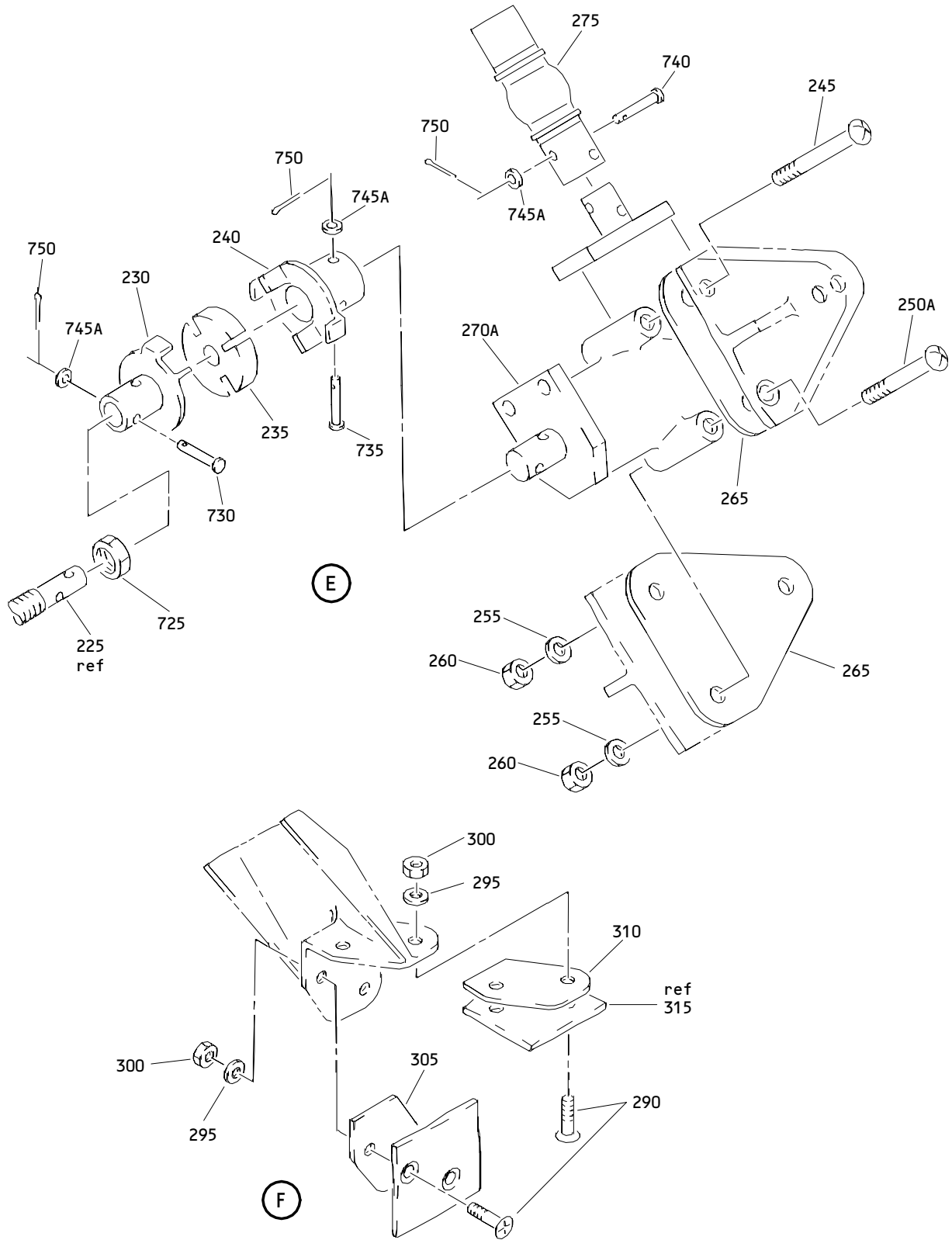
ILLUSTRATED PARTS LIST  
 01.1 Page 1015  
 Jul 01/04



No. 2 Openable Window Operating Mechanism Assembly  
 Figure 1 (Sheet 3)

**56-11-21**

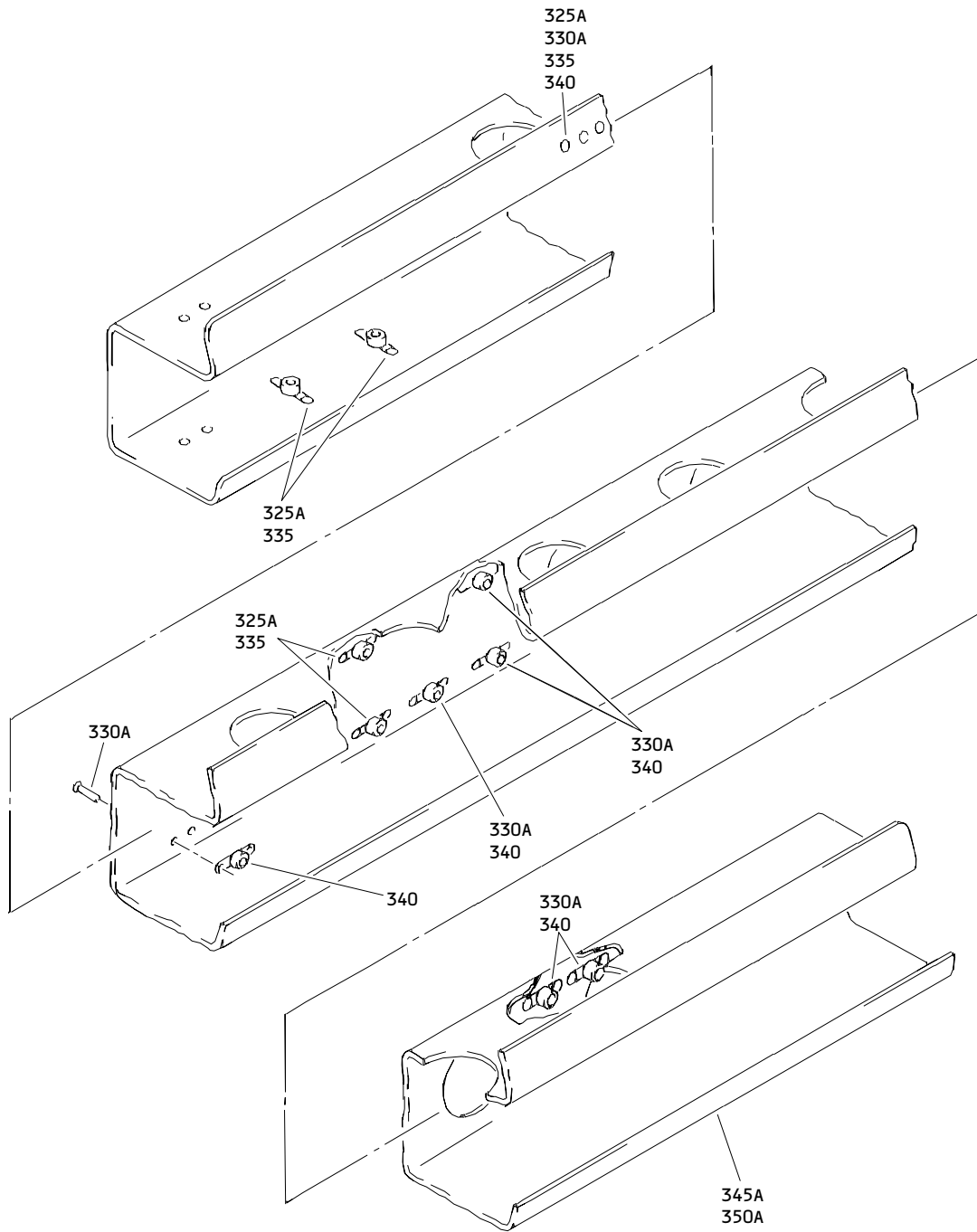
ILLUSTRATED PARTS LIST  
 01.1 Page 1016  
 Jul 01/04



No. 2 Openable Window Operating Mechanism Assembly  
 Figure 1 (Sheet 4)

**56-11-21**

ILLUSTRATED PARTS LIST  
 01.1 Page 1017  
 Jul 01/04

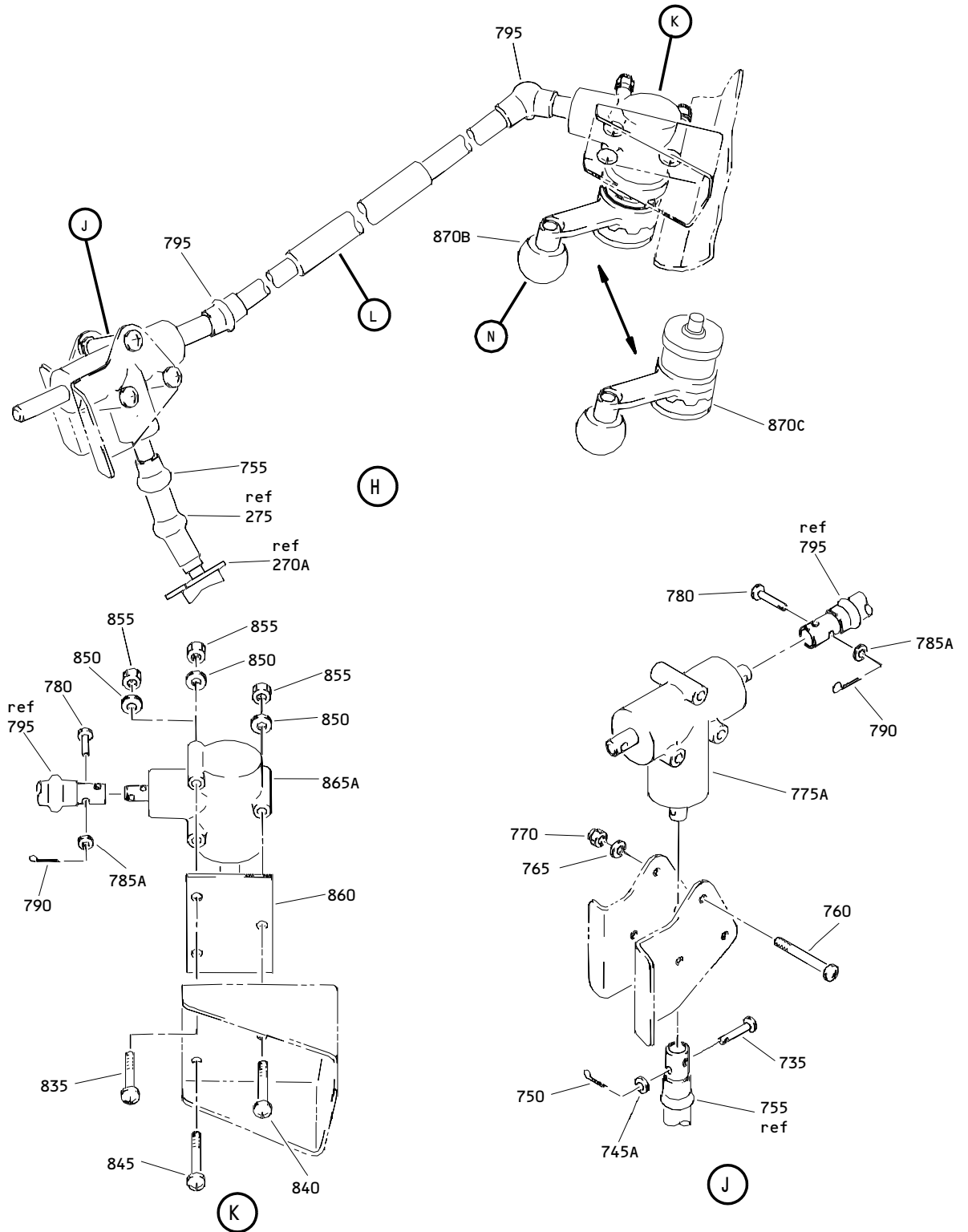


(G)

No. 2 Openable Window Operating Mechanism Assembly  
 Figure 1 (Sheet 5)

**56-11-21**

ILLUSTRATED PARTS LIST  
 01.1 Page 1018  
 Jul 01/04

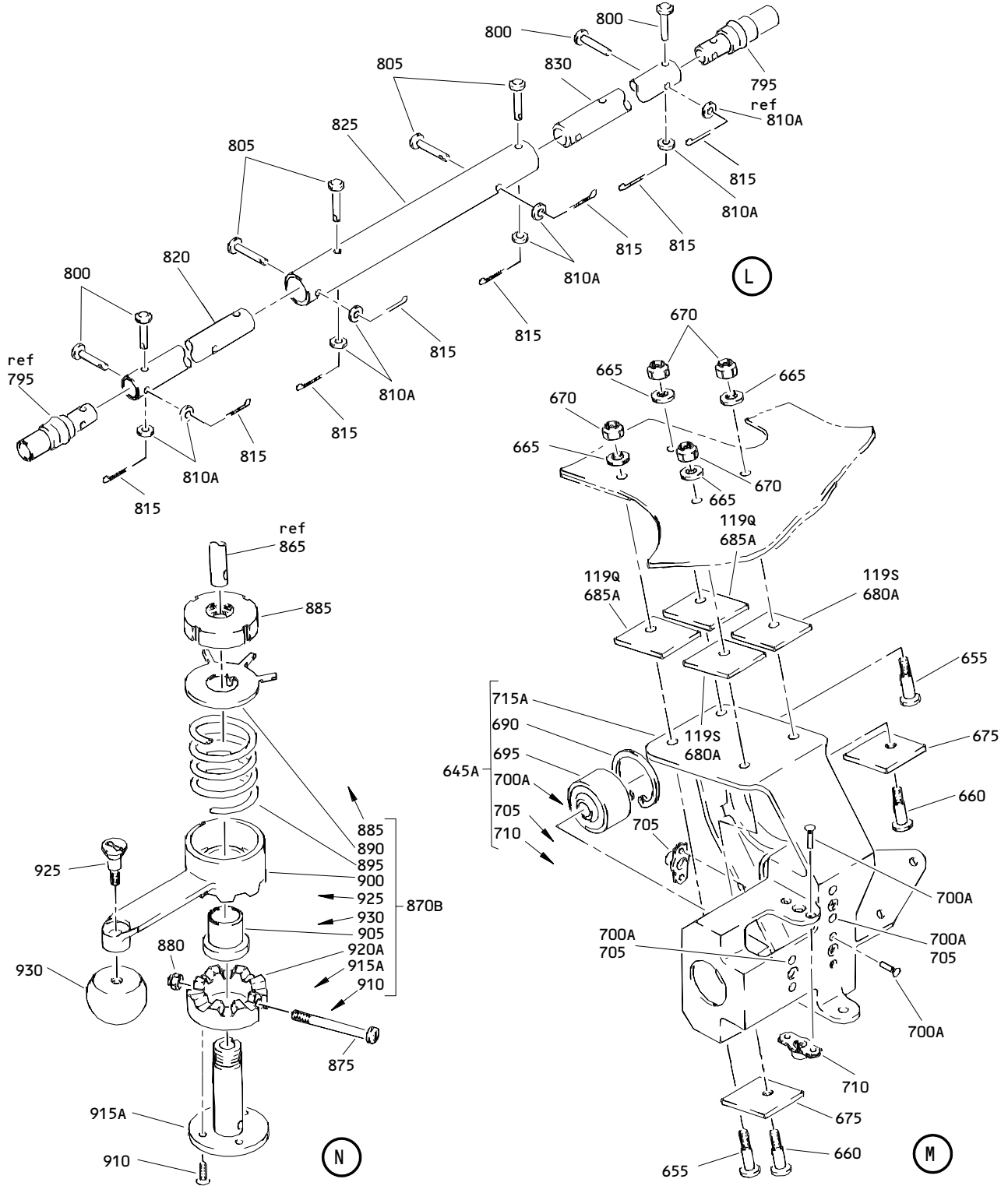


No. 2 Openable Window Operating Mechanism Assembly  
Figure 1 (Sheet 6)

**56-11-21**

ILLUSTRATED PARTS LIST  
01.1 Page 1019  
Jul 01/04





**No. 2 Openable Window Operating Mechanism Assembly  
Figure 1 (Sheet 7)**

**56-11-21**

**ILLUSTRATED PARTS LIST  
01.1 Page 1020  
Jul 01/04**

**BOEING**  
 COMPONENT  
 MAINTENANCE MANUAL

FIG. & ITEM	PART NO.	AIRLINE PART NUMBER	NOMENCLATURE 1234567	EFF CODE	QTY PER ASSY
01-					
-1	141T4843-7		DELETED		
-1A	141T4843-17		DELETED		
-1B	141T4843-23		DELETED		
-1C	141T4843-25		DELETED		
-1D	141T4843-29		DELETED		
-1E	141T4843-31		DELETED		
-1F	141T4843-33		DELETED		
-1G	141T4843-39		DELETED		
-1H	141T4843-501		DELETED		
-1J	141T4843-503		DELETED		
-1K	141T4843-505		DELETED		
R -1L	141T4843-507		MECHANISM ASSY-NO. 2 OPENABLE WINDOW OPERATION (LH)	A	RF
R -1M	141T4843-509		MECHANISM ASSY-NO. 2 OPENABLE WINDOW OPERATION (LH)	B	RF
R -1N	141T4843-511		MECHANISM ASSY-NO. 2 OPENABLE WINDOW OPERATION (LH)	C	RF
R -1P	141T4843-513		MECHANISM ASSY-NO. 2 OPENABLE WINDOW OPERATION (LH)	D	RF
-1Q	141T4843-515		DELETED		
-1R	141T4843-517		MECHANISM ASSY-NO. 2 OPENABLE WINDOW OPERATION (LH)	F	RF
-1S	141T4843-47		MECHANISM ASSY-NO. 2 OPENABLE WINDOW OPERATION (LH)	S	RF
-1T	141T4843-51		MECHANISM ASSY-NO. 2 OPENABLE WINDOW OPERATION (LH)	T	RF
R -1U	141T4843-59		MECHANISM ASSY-NO. 2 OPENABLE WINDOW OPERATION (LH)	G	RF
R -1V	141T4843-65		MECHANISM ASSY-NO. 2 OPENABLE WINDOW OPERATION (LH)	H	RF
-5	141T4843-8		DELETED		
-5A	141T4843-18		DELETED		
-5B	141T4843-24		DELETED		
-5C	141T4843-26		DELETED		
-5D	141T4843-30		DELETED		
-5E	141T4843-32		DELETED		

**56-11-21**

ILLUSTRATED PARTS LIST  
 01.1 Page 1021  
 Jul 01/04

FIG. & ITEM	PART NO.	AIRLINE PART NUMBER	NOMENCLATURE 1234567	EFF CODE	QTY PER ASSY
01-					
-5F	141T4843-34		DELETED		
-5G	141T4843-502		DELETED		
-5H	141T4843-504		DELETED		
R -5J	141T4843-508		MECHANISM ASSY-NO. 2 OPENABLE WINDOW OPERATION (RH)	N	RF
R -5K	141T4843-510		MECHANISM ASSY-NO. 2 OPENABLE WINDOW OPERATION (RH)	P	RF
R -5L	141T4843-512		MECHANISM ASSY-NO. 2 OPENABLE WINDOW OPERATION (RH)	Q	RF
-5M	141T4843-516		MECHANISM ASSY-NO. 2 OPENABLE WINDOW OPERATION (RH)	R	RF
-5N	141T4843-48		MECHANISM ASSY-NO. 2 OPENABLE WINDOW OPERATION (RH)	U	RF
-5P	141T4843-52		MECHANISM ASSY-NO. 2 OPENABLE WINDOW OPERATION (RH)	V	RF
R -5Q	141T4843-58		MECHANISM ASSY-NO. 2 OPENABLE WINDOW OPERATION (RH)	J	RF
R -5R	141T4843-60		MECHANISM ASSY-NO. 2 OPENABLE WINDOW OPERATION (RH)	K	RF
R -5S	141T4843-66		MECHANISM ASSY-NO. 2 OPENABLE WINDOW OPERATION (RH)	L	RF
R -5T	141T4843-68		MECHANISM ASSY-NO. 2 OPENABLE WINDOW OPERATION (RH)	M	RF
R 10	BACB30NR3K3		DELETED		
R 10A	BACB30NM3K3		.BOLT	A-D, F N-R, T, V	1
R 15	BACB30NU4K3		DELETED		
R 15A	BACB30VF4K3		.BOLT		1
R 20	141T4843-13		.BOLT	A-D, N-Q	1
-20A	141T4843-514		.BOLT- (OPT ITEM 20B)	F-M, R-V	1
-20B	BACB30VF4K2		.BOLT- (OPT ITEM 20A)	F-M, R-V	1

56-11-21

ILLUSTRATED PARTS LIST

01.1

Page 1022

Jul 01/04

**BOEING**  
 COMPONENT  
 MAINTENANCE MANUAL

FIG. & ITEM	PART NO.	AIRLINE PART NUMBER	NOMENCLATURE 1234567	EFF CODE	QTY PER ASSY
R 01-25	BACB30NR4K4		.BOLT		1
	BACB30NR3K10		DELETED		
	BACB30NR3K14		DELETED		
R 30B	BACB30NM3K14		.BOLT		1
R 35	BACR15BA3AD		.RIVET- (SIZE DETERMINE ON INST)		1
R 37	AN960PD10L		.WASHER		1
R 40	AN960C416		.WASHER		1
	BACW10BP3C		DELETED		
R 50	BACW10BP3P		.WASHER		2
R 55	BRH10C3M		.NUT- (V52828) (SPEC BACN10JC3CM) (OPT T6C1032JM (V11815)) (OPT 97E02 (V80539)) (OPT 109LH9075-3W (V72962)) (OPT VN303D02 (V92215)) (OPT NS202101SE02 (V80539)) (OPT H01-3BAC (V15653))		1
	60	141T4848-3	DELETED		
	60A	141T4848-5	DELETED		
	60B	141T4848-7	DELETED		
R 60C	141T4848-501		.TRACK-LH LWR	A-D, F-H,S ,T	1

**56-11-21**

FIG. & ITEM	PART NO.	AIRLINE PART NUMBER	NOMENCLATURE 1234567	EFF CODE	QTY PER ASSY
01-					
-65	141T4848-4		DELETED		
-65A	141T4848-6		DELETED		
-65B	141T4848-8		DELETED		
R -65C	141T4848-502		.TRACK-RH LWR	J-R,U ,V	1
R 70	BACR15BA3AD		.RIVET- (SIZE DETERMINE ON INST)		2
R 75	BRFM20C3M		.NUTPLATE- (V52828) (SPEC BACN10JN3CM) (OPT MF1001-3BAC (V15653)) (OPT NS103218SE02 (V80539)) (OPT VN252D02 (V92215)) (OPT 109F9201M3 (V72962)) (OPT T8125C3C (V11815)) (OPT 109F9201M3 (V72962)) (OPT MF53050-3DL (V15653))		1
R 80	232T1434-19		.BRACKET	A-D, F-H,S ,T	1
R -85	232T1434-20		.BRACKET	J-R,U ,V	1

56-11-21

 ILLUSTRATED PARTS LIST  
 01.1 Page 1024  
 Jul 01/04


**BOEING**  
 COMPONENT  
 MAINTENANCE MANUAL

FIG. & ITEM	PART NO.	AIRLINE PART NUMBER	NOMENCLATURE 1234567	EFF CODE	QTY PER ASSY
R 01-90	BACS12FA3K8		.SCREW- (OPT ITEM 90A)		4
-90A	BACS12CK3-8		.SCREW- (OPT ITEM 90)		4
R 92	AN960PD10L		.WASHER		4
R 95	BACR15BA3AD		.RIVET- (SIZE DETERMINE ON INST)		8
R 100	BRFM20C3M		.NUTPLATE- (V52828) (SPEC BACN10JN3CM) (OPT MF1001-3BAC (V15653)) (OPT NS103218SE02 (V80539)) (OPT VN252D02 (V92215)) (OPT 109F9201M3 (V72962)) (OPT T8125C3C (V11815)) (OPT 109F9201M3 (V72962)) (OPT MF53050-3DL (V15653))		4
102	BACS40R08D20F		DELETED		
102A	BACS40R008D020F		.SHIM	A-D,F ,N-R, T,V	AR
R 105	MS24665-1011		.PIN-COTTER		1
R 110	MS20392-1C25		.PIN-DRILLED SHANK		1
115	AN960C8L		DELETED		
R 115A	AN960C4L		.WASHER		1
R 117	141T4921-2		.STOP-BALL SCREW	A-D,F ,N-R, T,V	1
-117A	141T4921-3		DELETED		
-118	141T4843-5001		.COLLECTOR-LIMITED PART	S	1
-118A	141T4843-5002		.COLLECTOR-LIMITED PART	S	1
R -118B	141T4843-5005		.COLLECTOR-LIMITED PART	S	1
-118H	141T4843-5003		.COLLECTOR-LIMITED PART	U	1

56-11-21

ILLUSTRATED PARTS LIST

01.1

Page 1025

Jul 01/04



COMPONENT  
MAINTENANCE MANUAL

FIG. & ITEM	PART NO.	AIRLINE PART NUMBER	NOMENCLATURE 1234567	EFF CODE	QTY PER ASSY
01-					
R -118J	141T4843-5004		.COLLECTOR-LIMITED PART	U	1
-118K	141T4843-5006		.COLLECTOR-LIMITED PART	U	1
119	141T4921-3		..STOP-BALL SCREW (141T4921-4 T/W 141T4921-5 AND 141T4921-6 REPLACES 141T4921-3 ONE WAY FORWARD) (USED ON ITEMS 118, 118H)	S,U	1
-119A	141T4921-4		..STOP-BALL SCREW (141T4921-4 T/W 141T4921-5 AND 141T4921-6 REPLACES 141T4921-3 ONE WAY FORWARD) (USED ON ITEMS 118A, 118B, 118J, 118K)	S,U	1
-119B	141T4921-9		..STOP ASSY- (USED ON ITEMS 118A, 118B, 118J, 118K)	S,U	1
119E	141T4921-7		...SUPPORT- (USED ON ITEM 119B)	S,U	1
119H	141T4921-5		DELETED		
119J	141T4921-8		...BUMPER- (OPT ITEM 119K) (USED ON ITEM 119B)	S,U	1
-119K	141T4921-10		...BUMPER- (OPT ITEM 119J) (USED ON ITEM 119B)	S,U	1
119L	BACB30NM3K6		..BOLT- (USED ON ITEMS 118A, 118B, 118J, 118K)	S,U	1
119N	BACS40R008D020F		..SHIM- (USED ON ITEMS 118A, 118B, 118J, 118K)	S,U	AR
119Q	BACS40R012E012F		..SHIM- (USED ON ITEMS 118A, 118B, 118J, 118K)	S,U	AR
119R	141T4921-6		DELETED		
119S	BACS40R012E018F		..SHIM- (USED ON ITEMS 118A, 118B, 118J, 118K)	S,U	AR

56-11-21


**BOEING**  
 COMPONENT  
 MAINTENANCE MANUAL

FIG. & ITEM	PART NO.	AIRLINE PART NUMBER	NOMENCLATURE 1234567	EFF CODE	QTY PER ASSY
01-					
R 120	141T4887-1		.BLOCK ASSY-BRG		1
R 125	MS16625-4100		..RING		1
R 130	ASR4-30		..BEARING- (VS0352) (SPEC BACB10CK4)		1
R 135	141T4887-5		..BLOCK-BRG		1
R 140	MS51021-113		.SETSCREW		1
R 145	141T4923-1		.BOLT-SPECIAL		2
R 150	AN960416L		.WASHER		2
R 155	141T4920-2		.FLANGE-BALL SCREW		1
160	141T4883-1		DELETED		
R 160A	141T4883-3		.CARRIAGE ASSY-(LH SIDE)	A,B,F	1
-160B	141T4883-501		.CARRIAGE ASSY-(LH SIDE)	S,T	1
-160C	141T4883-501		.CARRIAGE ASSY-(LH SIDE) (LIMITED)	C,D	1
R -160D	141T4883-3		.CARRIAGE ASSY-(LH SIDE) (LIMITED)	C,D	1
R -160E	141T4883-9		.CARRIAGE ASSY-(LH SIDE)	G,H	1
-165	141T4883-2		DELETED		
R -165A	141T4883-4		.CARRIAGE ASSY-(RH SIDE)	N,P,R	1
-165B	141T4883-502		.CARRIAGE ASSY-(RH SIDE)	U,V	1
R -165C	141T4883-4		.CARRIAGE ASSY-(RH SIDE) (LIMITED)	Q	1
-165D	141T4883-502		.CARRIAGE ASSY-(RH SIDE) (LIMITED)	Q	1
R -165E	141T4883-10		.CARRIAGE ASSY-(RH SIDE)	J-M	1
R 170	BRH10A5		..NUT- (V52828) (SPEC BACN10JC5) (OPT T6S524J (V11815)) (OPT 96-054 (V80539)) (OPT RMLH9075-5W (V72962)) (OPT H10-5BAC (V15653))		2

56-11-21

ILLUSTRATED PARTS LIST

01.1

Page 1027

Jul 01/04



FIG. & ITEM	PART NO.	AIRLINE PART NUMBER	NOMENCLATURE 1234567	EFF CODE	QTY PER ASSY
01-					
R 175	AN960PD516		..WASHER		2
R 177	AN960PD516		..WASHER- (ITEM 185A PLUS TWO ITEM 177 OPT TO ITEM 185L)	A-D,F ,N-V	4
R 180	NAS43DD5-13		..SPACER		2
185	MS21432-5RA14		DELETED		
185A	HRS3CAR16		..BEARING- (V60380) (ITEM 185A PLUS TWO ITEM 177 OPT TO ITEM 185L)	A-D,F ,N-V	2
185B	HRS3CR16		DELETED		
-185C	MS21432-5R14A		DELETED		
R 185L	MS21432-5R14A		..BEARING- (ITEM 185A PLUS TWO ITEM 177 OPT TO ITEM 185L)	A-D,F ,N-V	2
R -185M	MS21432-5R14A		..BEARING- (OPT ITEM 186)	G-M	2
R 186	141T4883-13		..KIT ASSY-SUB (OPT ITEM 185M)	G-M	2
R 186L	AN960PD516		...WASHER	G-M	2
R 187	HRS3CAR16		...BEARING- (V60380)	G-M	1
R 190	BRH10A4		..NUT- (V52828) (SPEC BACN10JC4) (OPT T6S428J (V11815)) (OPT 96-048 (V80539)) (OPT VN303A048 (V92215)) (OPT RMLH9075-4W (V72962)) (OPT NS202101-048 (V80539)) (OPT H10-4BAC (V15653))		4

56-11-21

ILLUSTRATED PARTS LIST

01.1

Page 1028

Jul 01/04


**BOEING**  
 COMPONENT  
 MAINTENANCE MANUAL

FIG. & ITEM	PART NO.	AIRLINE PART NUMBER	NOMENCLATURE 1234567	EFF CODE	QTY PER ASSY
01-					
R 195	AN960PD416		..WASHER		4
R 200	NAS43DD4-7		..SPACER		4
R 205	CC55147		..ROLLER-CAM (V60380) (OPT ITEM 205A)		4
-205A	CF2809		..ROLLER-CAM (V60380) (OPT ITEM 205)		4
210	141T4890-1		DELETED		
R 210A	141T4890-9		..BRACKET-LINK (USED ON ITEM 160D)	A-D,F	1
-210B	141T4890-501		..BRACKET-LINK (USED ON ITEM 160C)	C,D,S ,T	1
R -210C	141T4890-15		..BRACKET-LINK	G,H	1
-215	141T4890-2		DELETED		
R -215A	141T4890-10		..BRACKET-LINK (USED ON ITEM 165C)	N-R	1
-215B	141T4890-502		..BRACKET-LINK (USED ON ITEM 165B)	Q,U,V	1
R -215C	141T4890-16		..BRACKET-LINK	J-M	1
220	141T4889-1		DELETED		
R 220A	141T4889-3		..CARRIAGE- (USED ON ITEMS 160D, 165C)	A-D,F ,N-R	1
-220B	141T4889-501		..CARRIAGE- (USED ON ITEMS 160C, 165B)	C,D, G-M,Q ,S,T, U,V	1
R 225	141T4918-2		.SCREW-BALL	A,B,N ,P	1
-225A	141T4918-2		DELETED		
R -225B	141T4918-3		.SCREW-BALL	C,D, F-M, Q-V	1

56-11-21

ILLUSTRATED PARTS LIST

01.1

Page 1029

Jul 01/04

FIG. & ITEM	PART NO.	AIRLINE PART NUMBER	NOMENCLATURE 1234567	EFF CODE	QTY PER ASSY
01-					
R 230	141T4919-4		. COUPLING-AFT		1
R 235	141T4919-5		. SPACER		1
R 240	141T4919-3		. COUPLING-FWD		1
R 245	BACB30NT3K26		. BOLT		2
	250 BACB30NN3K26		DELETED		
R 250A	BACB30NT3K25		. BOLT		1
R 255	AN960PD10		. WASHER		3
R 260	BRH10C3M		. NUT-		3
			(V52828)		
			(SPEC BACN10JC3CM)		
			(OPT T6C1032JM		
			(V11815))		
			(OPT 97E02		
			(V80539))		
			(OPT 109LH9075-3W		
			(V72962))		
			(OPT VN303D02		
			(V92215))		
			(OPT NS202101SE02		
			(V80539))		
			(OPT H01-3BAC		
			(V15653))		
R 265	141T4915-3		. SHIM		2
	270 OR3000M15		DELETED		
R 270A	141T4843-5		. GEARBOX-		1
			(OPT ITEM 270B)		
-270B	R3000M15		. GEARBOX-		1
			(V81039)		
			(OPT ITEM 270A)		
R 275	MS20271B8		. JOINT		1
R 280	BACR15BA4AD		. RIVET-		1
			(SIZE DETERMINE ON INST)		
R 282	BACB30NM3K3		. BOLT		1
R 285	BACS12FA3K8		. SCREW-		1
			(OPT ITEM 285A)		
R -285A	BACS12CK3-8		. SCREW-		1
			(OPT ITEM 285)		
R 290	BACB30NM3K5		. BOLT		4
R 295	AN960PD10		. WASHER		6

56-11-21

 ILLUSTRATED PARTS LIST  
 01.1 Page 1030  
 Jul 01/04


**BOEING**  
 COMPONENT  
 MAINTENANCE MANUAL

FIG. & ITEM	PART NO.	AIRLINE PART NUMBER	NOMENCLATURE 1234567	EFF CODE	QTY PER ASSY
R 01- 297	AN960PD10L		.WASHER		AR
R 300	BRH10C3M		.NUT- (V52828) (SPEC BACN10JC3CM) (OPT T6C1032JM (V11815)) (OPT 97E02 (V80539)) (OPT 109LH9075-3W (V72962)) (OPT VN303D02 (V92215)) (OPT NS202101SE02 (V80539)) (OPT H01-3BAC (V15653))		5
R 302	232T1434-21		DELETED		
R 302A	232T1434-29		.BRACKET		1
R 305	141T4915-2		.SHIM		1
R 310	141T4915-1		.SHIM		1
R 315	141T4879-15		DELETED		
R 315A	141T4879-19		.CHANNEL ASSY	A-C	1
R -315B	141T4879-25		.CHANNEL ASSY	D,F-H ,S,T	1
R 320	141T4879-16		DELETED		
R -320A	141T4879-20		.CHANNEL ASSY	J-R,U ,V	1
R 325	BACR15BA3KE		DELETED		
R 325A	BACR15DR3A		..RIVET- (SIZE DETERMINE ON INST)	A-C	10
R 325B	BACR15DR3A		..RIVET- (SIZE DETERMINE ON INST)	D,F-H ,S,T	6
R 330	BACR15BA3KE		DELETED		
R 330A	BACR15DR3A		..RIVET- (SIZE DETERMINE ON INST)	J-R,U ,V	14

56-11-21

ILLUSTRATED PARTS LIST

01.1

Page 1031

Jul 01/04

FIG. & ITEM	PART NO.	AIRLINE PART NUMBER	NOMENCLATURE 1234567	EFF CODE	QTY PER ASSY
R 01-335	BRFM20C3M		..NUTPLATE- (V52828) (SPEC BACN10JN3CM) (OPT MF1001-3BAC (V15653)) (OPT NS103218SE02 (V80539)) (OPT VN252D02 (V92215)) (OPT 109F9201M3 (V72962)) (OPT T8125C3C (V11815)) (OPT 109F9201M3 (V72962)) (OPT MF53050-3DL (V15653))	A-C	5
R 335A	BRFM20C3M		..NUTPLATE- (V52828) (SPEC BACN10JN3CM) (OPT MF1001-3BAC (V15653)) (OPT NS103218SE02 (V80539)) (OPT VN252D02 (V92215)) (OPT 109F9201M3 (V72962)) (OPT T8125C3C (V11815)) (OPT 109F9201M3 (V72962)) (OPT MF53050-3DL (V15653))	D,F-H ,S,T	3

# 56-11-21

ILLUSTRATED PARTS LIST

01.1

Page 1032

Jul 01/04


**BOEING**  
 COMPONENT  
 MAINTENANCE MANUAL

FIG. & ITEM	PART NO.	AIRLINE PART NUMBER	NOMENCLATURE 1234567	EFF CODE	QTY PER ASSY
R 01-340	BRFM20C3M		..NUTPLATE- (V52828) (SPEC BACN10JN3CM) (OPT MF1001-3BAC (V15653)) (OPT NS103218SE02 (V80539)) (OPT VN252D02 (V92215)) (OPT 109F9201M3 (V72962)) (OPT T8125C3C (V11815)) (OPT 109F9201M3 (V72962)) (OPT MF53050-3DL (V15653)) (OPT ITEM 340A)	J-R,U ,V	7
R -340A	BRF200C3D		..NUTPLATE- (V52828) (SPEC BACN10JR3CFD) (OPT K51602-3BAC (V15653)) (OPT NS202476-02 (V80539)) (OPT 102F9201-3 (V72962)) (OPT T8092C1032CD (V11815)) (OPT ITEM 340)	J-R,U ,V	7
R 345	141T4879-17		DELETED		
R 345A	141T4879-21		..CHANNEL	A-C	1
R 345B	141T4879-23		DELETED		
R 350	141T4879-18		DELETED		
R 350A	141T4879-22		..CHANNEL	D,F-V	1
R 355	141T4914-3		.FILLER-DRIP SHLD		1
R 360	BACB30NR4K14		.BOLT		1
R 365	BACW10BP4C		DELETED		
R 370	BACW10BP4P		.WASHER		2

56-11-21

ILLUSTRATED PARTS LIST

01.1

Page 1033

Jul 01/04

FIG. & ITEM	PART NO.	AIRLINE PART NUMBER	NOMENCLATURE 1234567	EFF CODE	QTY PER ASSY
R 01-375	BRH10C4M		.NUT- (V52828) (SPEC BACN10JC4CM) (OPT T6C428JM (V11815)) (OPT 97E48 (V80539)) (OPT 109LH9075-4W (V72962)) (OPT VN303D048 (V92215)) (OPT 9NS202101SE048 (VA8053)) (OPT H01-4BAC (V15653))		1
600	141T4843-11		INSTALLATION PARTS BRACKET ASSY	A-D, F-H,S ,T	1
-605	141T4843-12		BRACKET ASSY	J-R,U ,V	1
610	BACB30NM4K14		ATTACHING PARTS BOLT		4
615	141T4877-1		-----*----- .BRACKET-AFT	A-D, F-H,S ,T	1
-620	141T4877-2		.BRACKET-AFT	J-R,U ,V	1
625	141T4914-1		DELETED		
-630	141T4914-2		DELETED		
635	141T4914-4		.SPACER-TAPERED	A-D, F-H,S ,T	1
-640	141T4914-5		.SPACER-TAPERED	J-R,U ,V	1
645	141T4885-1		DELETED		
645A	141T4885-7		BRACKET ASSY	A-D, F-H,S ,T	1
-650	141T4885-2		DELETED		
-650A	141T4885-8		BRACKET ASSY	J-R,U ,V	1

56-11-21

 ILLUSTRATED PARTS LIST  
 01.1 Page 1034  
 Jul 01/04


**BOEING**  
 COMPONENT  
 MAINTENANCE MANUAL

FIG. & ITEM	PART NO.	AIRLINE PART NUMBER	NOMENCLATURE	EFF CODE	QTY PER ASSY
01- 655	HL1012AZ10-10		1234567  ATTACHING PARTS BOLT- (V0PTK6) (SPEC BACB30NX10K10) (OPT HL12VAZ10-10 (V73197)) (OPT HL12VAZ10-10 (V92215)) (OPT HL12VAZ10-10 (V97928)) (OPT L802-10K10 (V06725)) (OPT HL12VAZ10-10 (V56878)) (OPT HL1012AZ10-10 (V06725)) (OPT HL1012AZ10-10 (V06950)) (OPT HL1012AZ10-10 (V17446)) (OPT HL1012AZ10-10 (V56878)) (OPT HL1012AZ10-10 (V60516)) (OPT HL1012AZ10-10 (V73197)) (OPT HL1012AZ10-10 (V97928))		2

56-11-21

ILLUSTRATED PARTS LIST

01.1

Page 1035

Jul 01/04



FIG. & ITEM	PART NO.	AIRLINE PART NUMBER	NOMENCLATURE 1234567	EFF CODE	QTY PER ASSY
01-660	HL1012AZ10-11		BOLT- (VOPTK6) (SPEC BACB30NX10K11) (OPT HL12VAZ10-11 (V73197)) (OPT HL12VAZ10-11 (V92215)) (OPT HL12VAZ10-11 (V97928)) (OPT L802-10K11 (V06725)) (OPT HL1012AZ10-11 (V06725)) (OPT HL1012AZ10-11 (V06950)) (OPT HL1012AZ10-11 (V17446)) (OPT HL1012AZ10-11 (V56878)) (OPT HL1012AZ10-11 (V60516)) (OPT HL1012AZ10-11 (V73197)) (OPT HL1012AZ10-11 (V97928)) (OPT HL12VAZ10-11 (V56878))		2
665	AN960PD516		WASHER		4
670	BACN10GW5		NUT		4
675	141T4843-9		FILLER-RADIUS		2
680	BACS40R12E18F		DELETED		
680A	BACS40R012E018F		SHIM	A-D, F ,N-R, T,V	2
685	BACS40R12E12F		DELETED		
685A	BACS40R012E012F		SHIM	A-D, F ,N-R, T,V	2
			-----*		
690	MS16625-4125		.RING	T,V	1

56-11-21

ILLUSTRATED PARTS LIST

01.1

Page 1036

Jul 01/04


**BOEING**  
 COMPONENT  
 MAINTENANCE MANUAL

FIG. & ITEM	PART NO.	AIRLINE PART NUMBER	NOMENCLATURE 1234567	EFF CODE	QTY PER ASSY
01-695	DAS5-20A1-509		.BEARING- (V77896) (SPEC BACB10CH50) (OPT ASRD5H30B (VS0352)) (OPT DAS5-20A4 (V77896)) (OPT DAS5-20A51 (V77896)) (OPT ASRD5-30B (VS0352))		1
700 700A	BACR15BA3 BACR15BBA3AD		DELETED .RIVET- (SIZE DETERMINE ON INST)		8
705	BRFM20C4M		.NUTPLATE- (V52828) (SPEC BACN10JN4CM) (OPT MF1001-4BAC (V15653)) (OPT NS103218SE048 (V80539)) (OPT VN252D048 (V92215)) (OPT 109F9201M4 (V72962)) (OPT T8125C4C (V11815)) (OPT T8125C4C (V11815))		3

56-11-21

ILLUSTRATED PARTS LIST

01.1

Page 1037

Jul 01/04

FIG. & ITEM	PART NO.	AIRLINE PART NUMBER	NOMENCLATURE 1234567	EFF CODE	QTY PER ASSY
01-710	BRFM20C3M		.NUTPLATE- (V52828) (SPEC BACN10JN3CM) (OPT MF1001-3BAC (V15653)) (OPT NS103218SE02 (V80539)) (OPT VN252D02 (V92215)) (OPT 109F9201M3 (V72962)) (OPT T8125C3C (V11815)) (OPT 109F9201M3 (V72962)) (OPT MF53050-3DL (V15653))		1
715	141T4885-5		DELETED		
715A	141T4885-9		.FITTING-BRKT	A-D, F-H,S ,T	1
720	141T4885-6		DELETED		
-720A	141T4885-10		.FITTING-BRKT	J-R,U ,V	1
725	BRH10C5M		NUT- (V52828) (SPEC BACN10JC5CM) (OPT T6C524JM (V11815)) (OPT 97E054 (V80539)) (OPT 109LH9075-5W (V72962)) (OPT H01-5BAC (V15653))		1

56-11-21

ILLUSTRATED PARTS LIST

01.1

Page 1038

Jul 01/04


**BOEING**  
 COMPONENT  
 MAINTENANCE MANUAL

FIG. & ITEM	PART NO.	AIRLINE PART NUMBER	NOMENCLATURE 1234567	EFF CODE	QTY PER ASSY
01-					
730	MS20392-1C15		PIN-DRILLED SHANK		2
735	MS20392-1C21		PIN-DRILLED SHANK		4
740	MS20392-1C23		PIN-DRILLED SHANK		2
745	AN960C8L		DELETED		
745A	AN960C4L		WASHER		8
750	MS24665-1011		PIN-COTTER		8
755	ACD5		JOINT-UNIV (V52504)		1
760	BAC30NT3K23		BOLT		3
765	AN960PD10		WASHER		3
770	BRH10C3M		NUT- (V52828) (SPEC BACN10JC3CM) (OPT T6C1032JM (V11815)) (OPT 97E02 (V80539)) (OPT 109LH9075-3W (V72962)) (OPT VN303D02 (V92215)) (OPT NS202101SE02 (V80539)) (OPT H01-3BAC (V15653))		3
R 775	OR1144		DELETED		
R 775A	1894T100-1		GEARBOX- (V98889) (SPEC S141T491-3) (OPT OR1144 (V81039)) (OPT XB0100 01147)) (OPT R1144 81039))		1
R -775B	R1144		GEARBOX- (V81039) (SPEC S141T491-3) (OPT 1894T100-1 (V98889))		1

56-11-21

ILLUSTRATED PARTS LIST

01.1

Page 1039

Jul 01/04

FIG. & ITEM	PART NO.	AIRLINE PART NUMBER	NOMENCLATURE 1234567	EFF CODE	QTY PER ASSY
01-					
780	MS20392-1C17		PIN-DRILLED SHANK		4
785	AN960C8L		DELETED		
785A	AN960C4L		WASHER		4
790	MS24665-1011		PIN-COTTER		4
795	MS20271B8		JOINT		2
800	MS20392-1C21		PIN-DRILLED SHANK		4
805	MS20392-1C25		PIN-DRILLED SHANK		4
810	AN960C8L		DELETED		
810A	AN960C4L		WASHER		8
815	MS24665-1011		PIN-COTTER		8
820	141T4922-5		SHAFT-TORQUE TUBE		1
825	141T4891-3		SHAFT-TORQUE TUBE		1
830	141T4922-4		SHAFT-TORQUE TUBE		1
835	BACB30NT3K28		BOLT		1
840	BACB30NT3K29		BOLT		1
845	BACB30NT3K30		BOLT		1
850	AS46-3		WASHER-		3
			(V10630)		
			(SPEC BACW10AU3)		
			(OPT K19701P3		
			(V15653))		
			(OPT 53488W1032		
			(V56878))		
			(OPT 6073-0		
			(V72962))		
			(OPT TLN1020L3W		
			(V08524))		
855	H19700P3		NUT-		3
			(V15653)		
			(SPEC BACN10MT3)		
			(OPT TLN1020-3N		
			(V08524))		
			(OPT 52LH6073-02		
			(V72962))		
			(OPT 53488-1032		
			(V56878))		

56-11-21

ILLUSTRATED PARTS LIST

01.1

Page 1040

Jul 01/04

**BOEING**  
 COMPONENT  
 MAINTENANCE MANUAL

FIG. & ITEM	PART NO.	AIRLINE PART NUMBER	NOMENCLATURE 1234567	EFF CODE	QTY PER ASSY
01-					
860	BACF3T01H21-25		FILLER		1
865	OR1141		DELETED		
R 865A	1894T100-1		GEARBOX-GEAR (V98889) (SPEC S141T491-1) (OPT R1141 (V81039))		1
R -865B	R1141		GEARBOX-GEAR (V81039) (SPEC S141T491-1) (OPT 1893T100-1 (V98889))		1
870	141T4882-6		DELETED		
870A	53676		DELETED		
870B	141T4882-7		HANDLE ASSY-CRANK (OPT ITEM 870C)	A-D,F ,N-R, T,V	1
870C	53676-1		HANDLE ASSY-CRANK (V84256) (OPT ITEM 870B)	A-D,F ,N-R, T,V	1
875	NAS623-2-21		ATTACHING PARTS		
880	H10-08BAC		SCREW		1
			NUT-		1
			(V15653) (SPEC BACN10JC08) (OPT NS202101-82 (V80539)) (OPT RMLH9075-82W (V72962)) (OPT T6S832J (V71087)) (OPT VN303A82 (V92215)) (OPT 96-82 (V80539)) (OPT BRH10A08 (V52828))		
			*-----		
885	141T4888-6		.NUT		1
890	141T4888-7		.WASHER-LOCK		1
895	141T4910-1		.SPRING		1
900	141T4888-11		.HANDLE		1
905	141T4888-4		.BUSHING		1

**56-11-21**

ILLUSTRATED PARTS LIST  
 01.1 Page 1041  
 Jul 01/04

FIG. & ITEM	PART NO.	AIRLINE PART NUMBER	NOMENCLATURE 1234567	EFF CODE	QTY PER ASSY
01-					
910	MS24693C48		. SCREW		3
915	141T4888-9		DELETED		
915A	141T4888-13		. CYLINDER-SPRT		1
920	141T4888-10		DELETED		
920A	141T4888-14		. PLATE-GEAR		1
925	141T4882-5		. BOLT		1
930	141T4882-3		. KNOB		1

R

- Item Not Illustrated

**56-11-21**

ILLUSTRATED PARTS LIST

01.1 Page 1042

Jul 01/04